

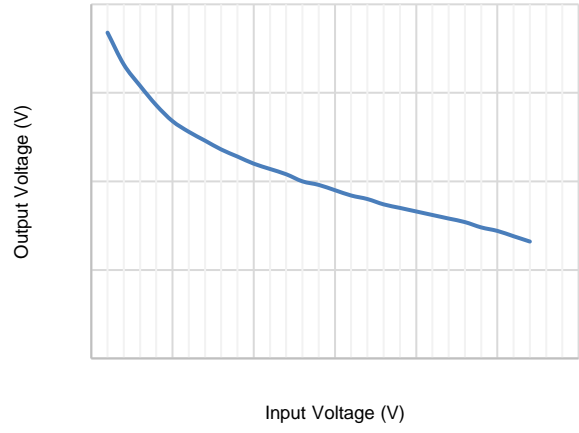
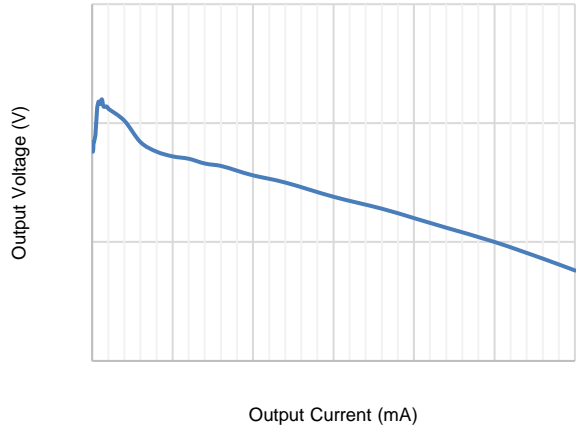
-
-
-
-
-
-
-
-
-
-

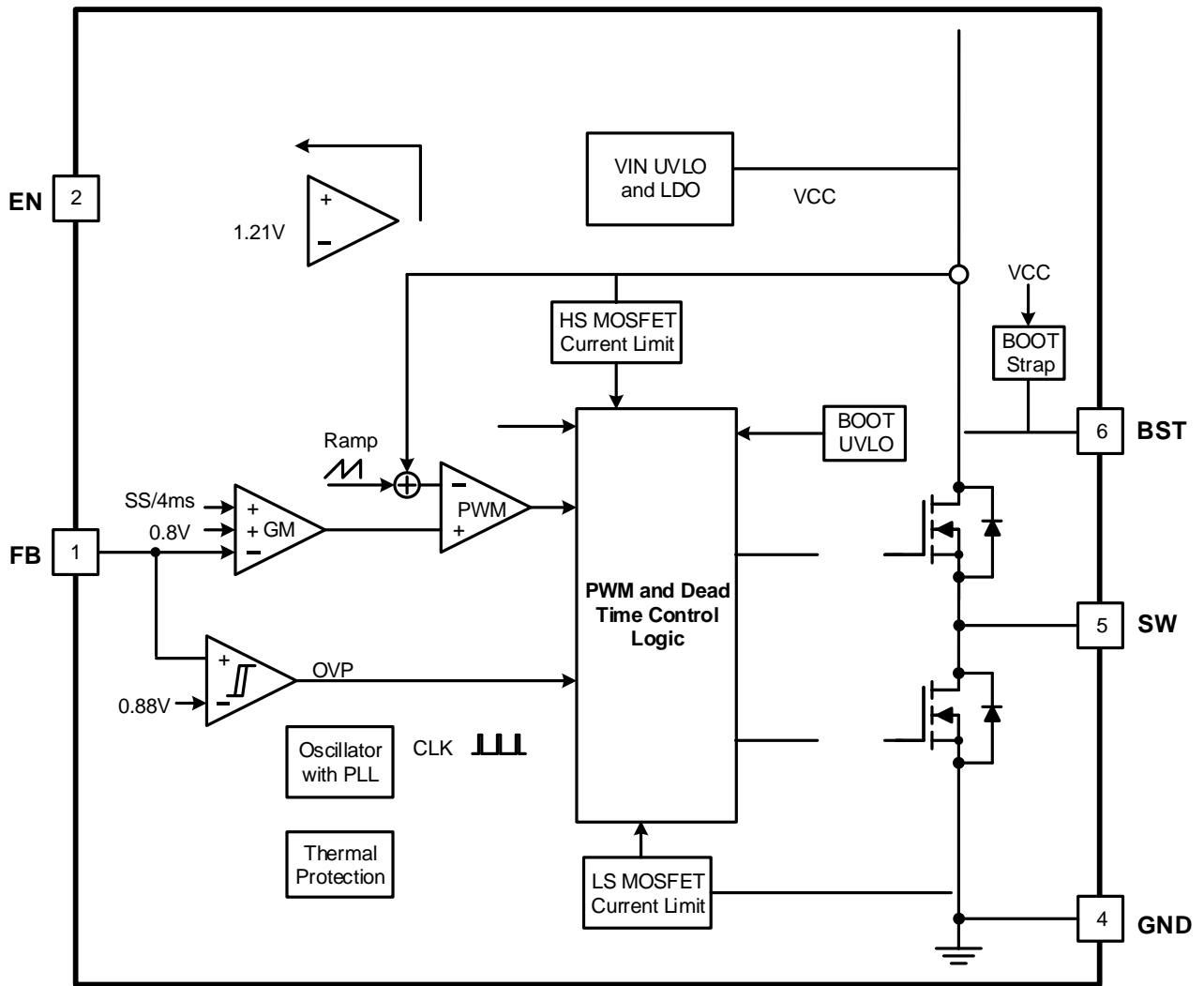
BST	6	Power supply for the high-side power MOSFET gate driver. Must connect a 0.1uF or greater ceramic capacitor between BST pin and SW node.
-----	---	---

(1)
(2)

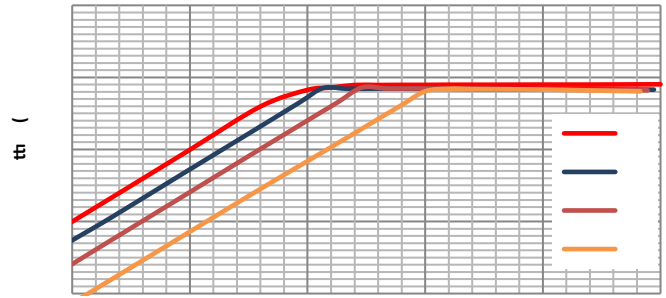
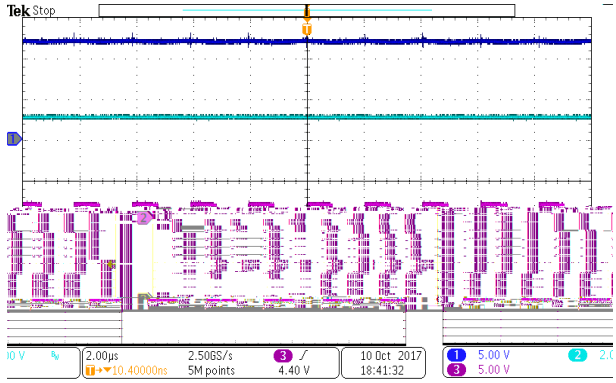
--	--	--	--	--

--	--	--	--	--

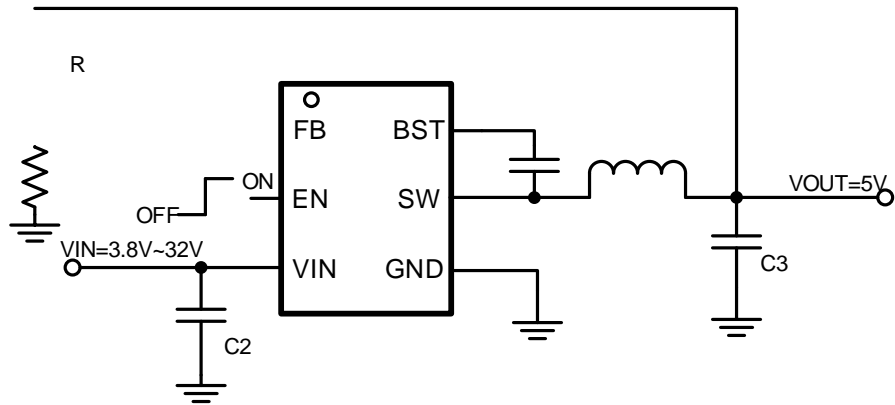












Design Parameters	Example Value
Input Voltage	24V
Output Voltage	5V
Output Current	3A
Output voltage ripple (peak to peak)	$\pm 0.3V$
Switching Frequency	400kHz

(3)

-
-
-

(4)

-

(5)

(6)

•
•
•

(7)

(8)

•
•
•

_____ (10)

_____ (11)

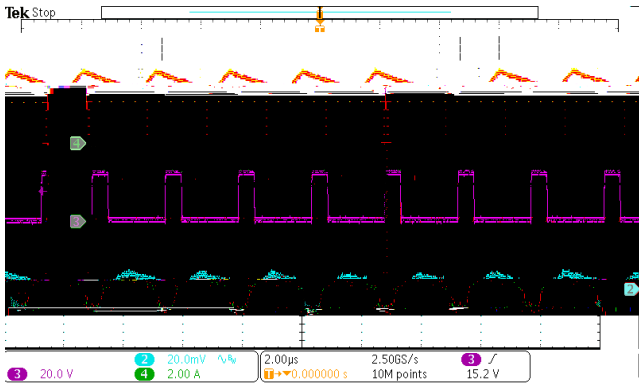


Figure 14. SW node waveform and Output Ripple
VIN=24V, IO_{UT}=3A

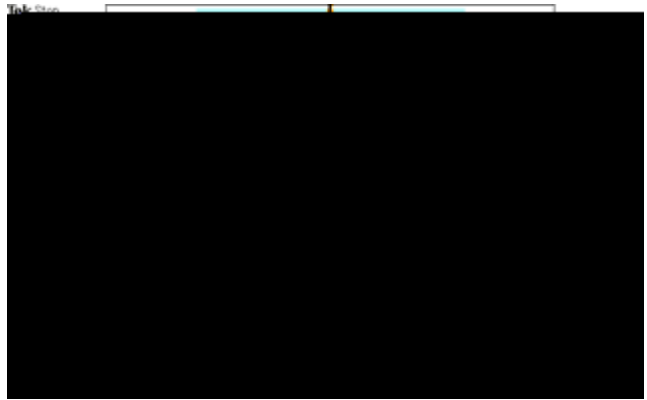


Figure 15. SW node Waveform and Output Ripple
VIN=24V, IO_{UT}=10mA

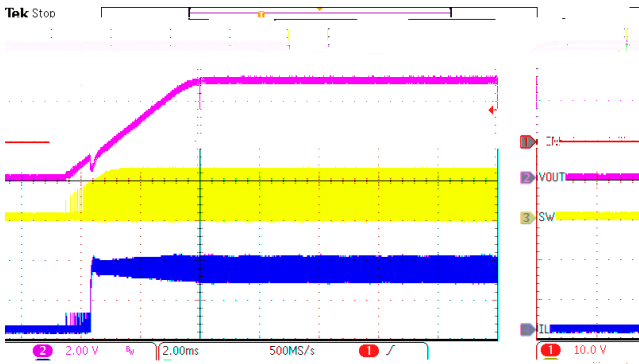


Figure 16. Power Up
VIN=24V, VO_{UT}=5V, IO_{UT}=3A

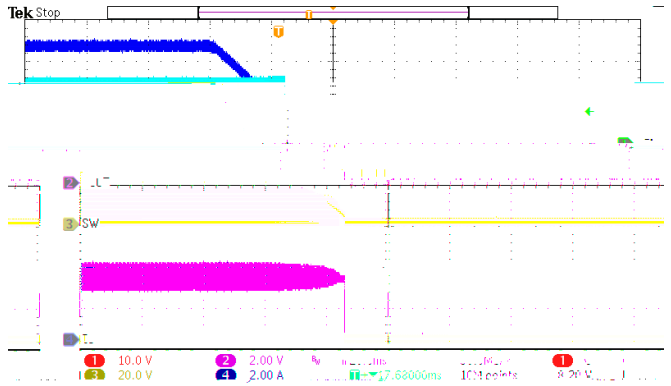


Figure 17. Power Down
VIN=24V, VO_{UT}=5V, IO_{UT}=3A

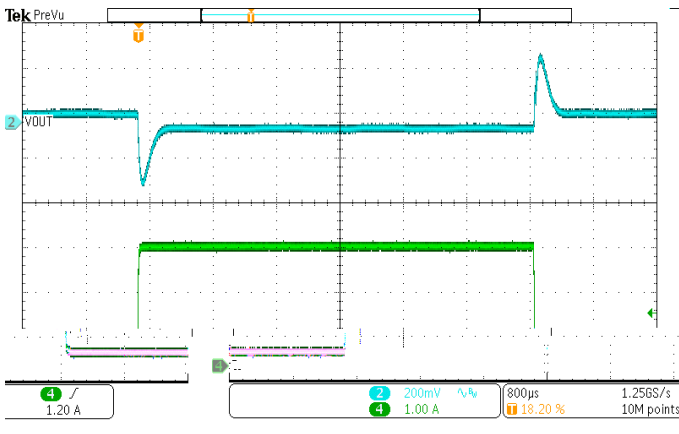


Figure 18. Load Transient
VO_{UT}=5V, IO_{UT}=0.3A to 2.7A, SR=250mA/us

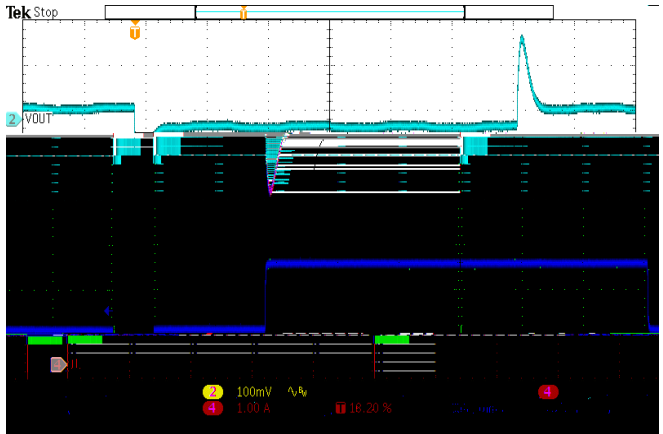
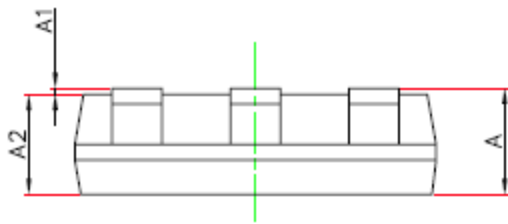
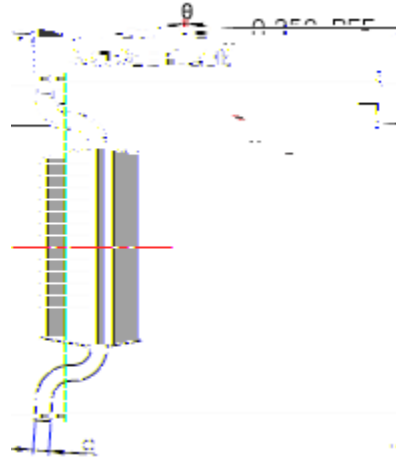
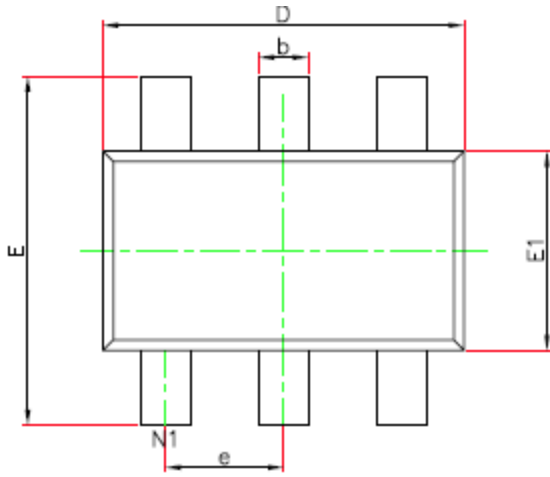
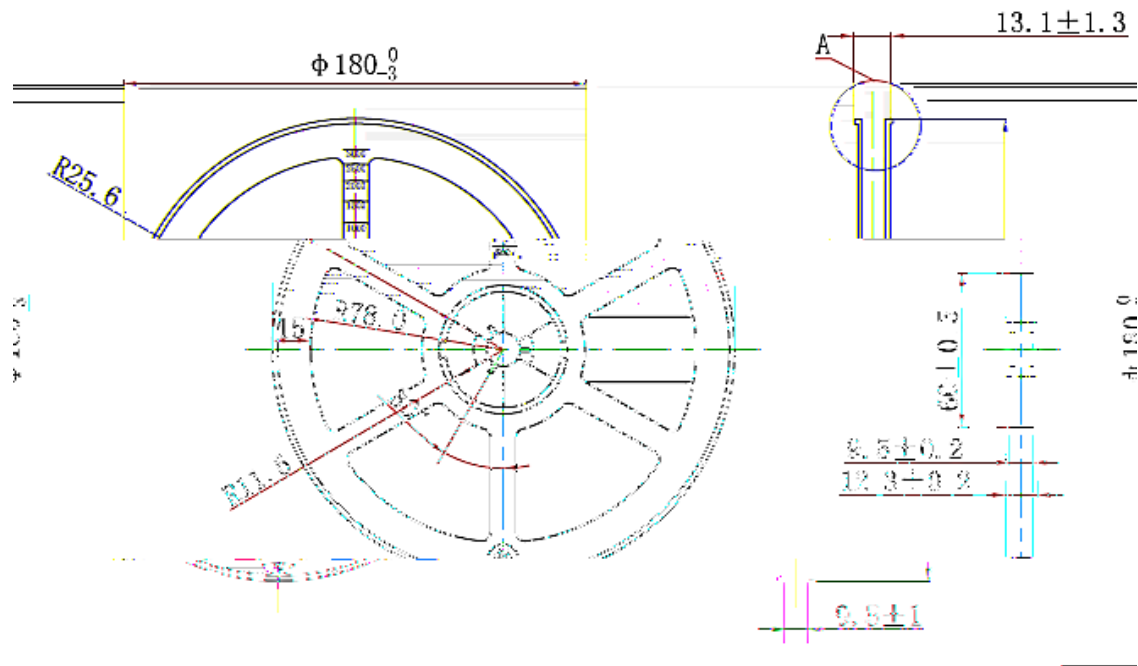


Figure 19. Load Transient
VO_{UT}=5V, IO_{UT}=0.75A to 2.25 A, SR=250mA/us



- 1.
- 2.
- 3.
- 4.
- 5.
- 6.

SYMBOL	Unit: Millimeter		
	MIN	TYP	MAX
A	-----		1.10
A1	0.000		0.10
A2	0.70		1.00
D	2.85		2.95
E	2.65		2.95
E1	1.55		1.65
b	0.30		0.50
c	0.08		0.20
e	0.95(BSC)		
L	0.30		0.60
	0		8



PN	DESCRIPTION	COMMENTS
SCT2320 SCT2321	3.8V-32V Vin, 2A Synchronous Step-down DCDC Converter with	