

SCT2A11

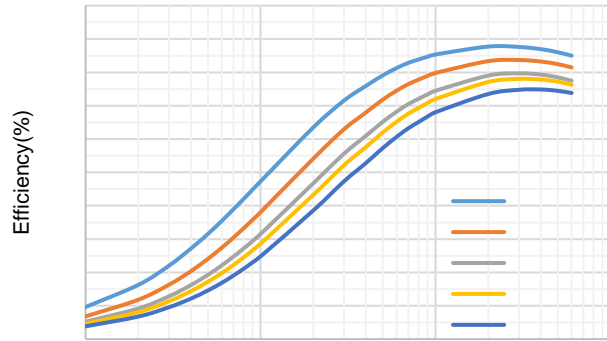
ORDERABLE DEVICE	PACKAGING TYPE	STANDARD PACK QTY	PACKAGE MARKING	PINS	PACKAGE DESCRIPTION

DESCRIPTION	MIN	MAX	UNIT

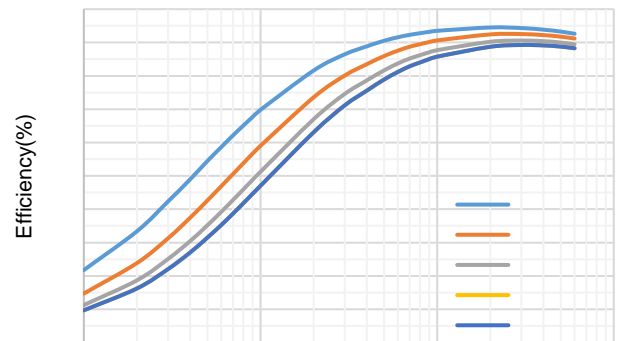
Figure 1. 8-Lead Plastic E-SOP

SCT2A11

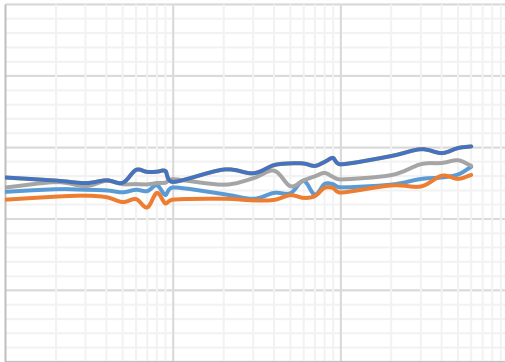
SYMBOL	PARAMETER	TEST CONDITION	MIN	TYP	MAX	UNIT
Reference and Control Loop						
Enable and Soft-startup						
Switching Frequency Timing						
Current Limit and Over Current Protection						



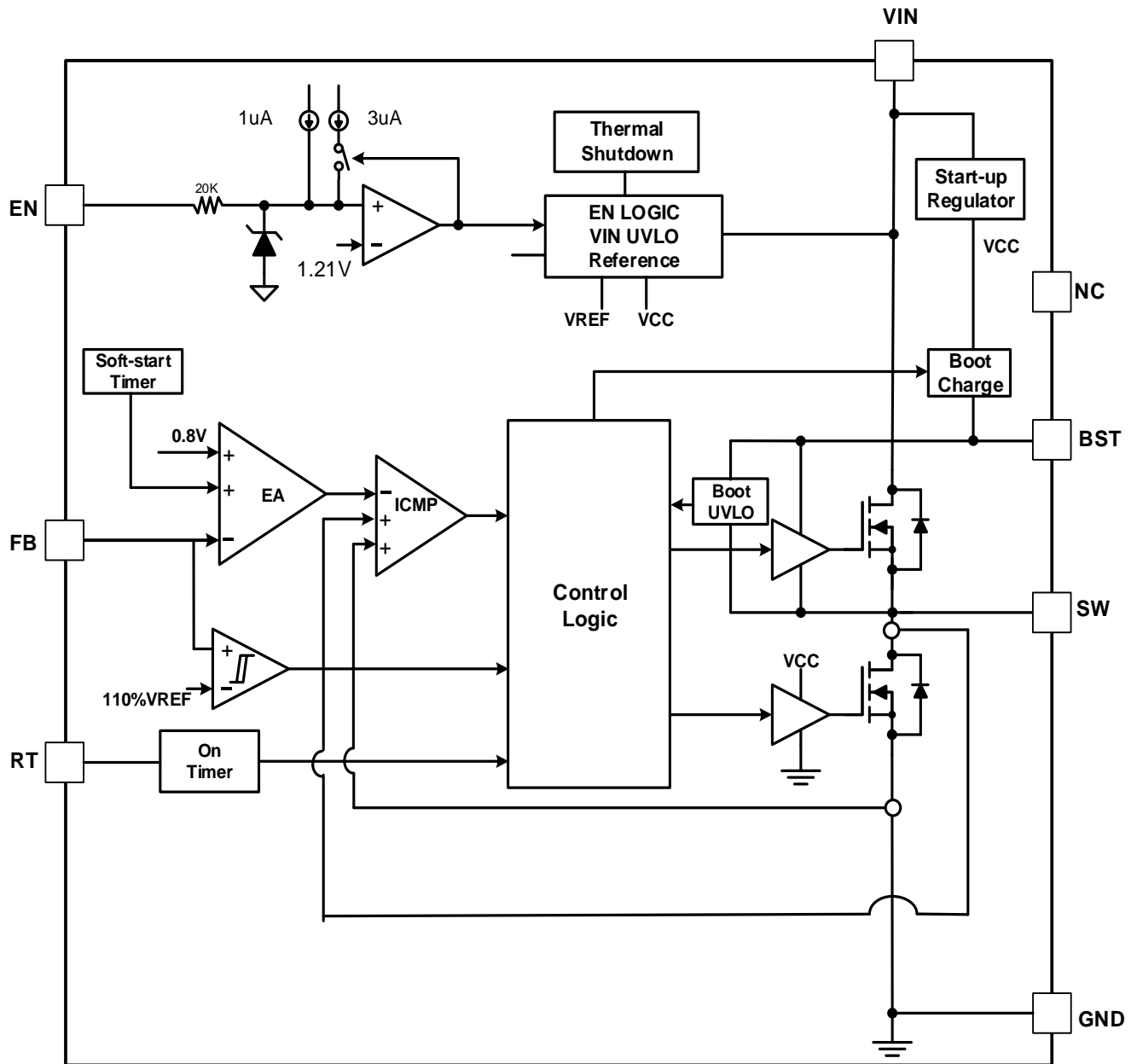
Output Current(A)



Output Current(A)



SCT2A11



Overview

VZLWFKLQJ

QRQ

Bootstrap Voltage Regulator

Over Current Limit and Hiccup Mode

Over voltage Protection

Thermal Shutdown

Typical Application

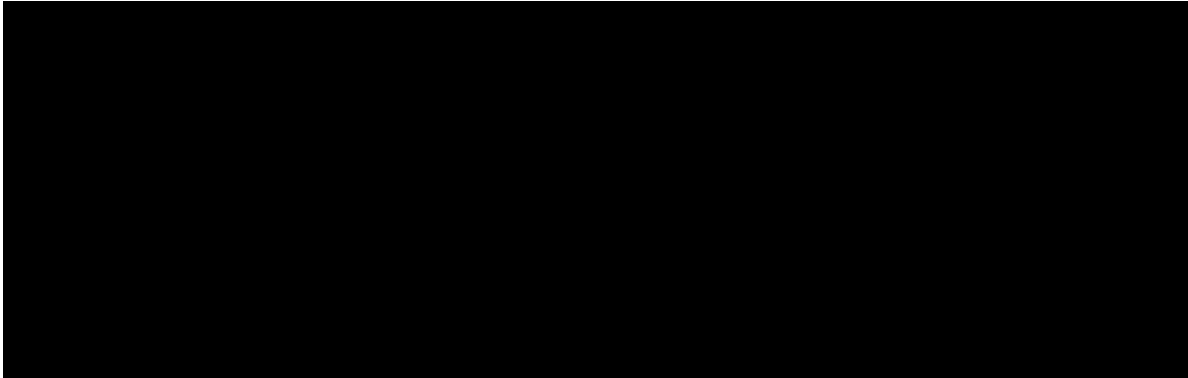


Figure 11. SCT2A11 Design Example, 12V Output with Programmable UVLO

Design Parameters	
Design Parameters	Example Value

Output Voltage

,) 1

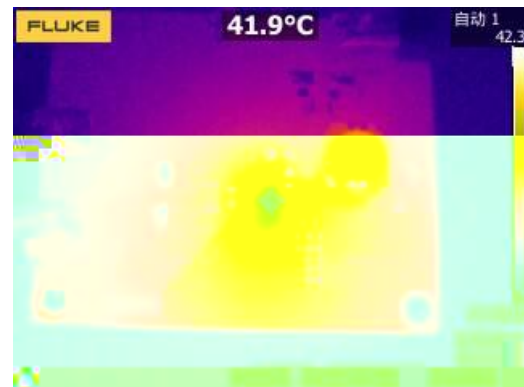
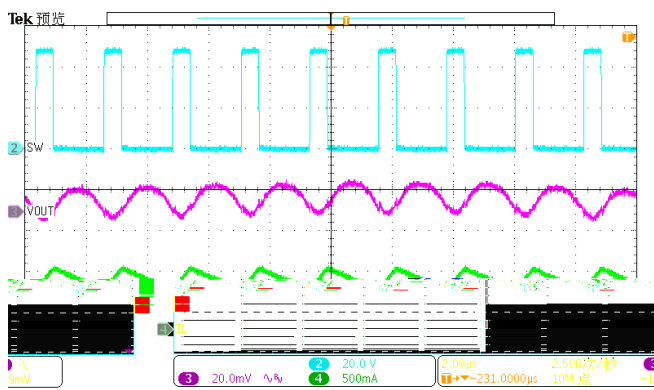
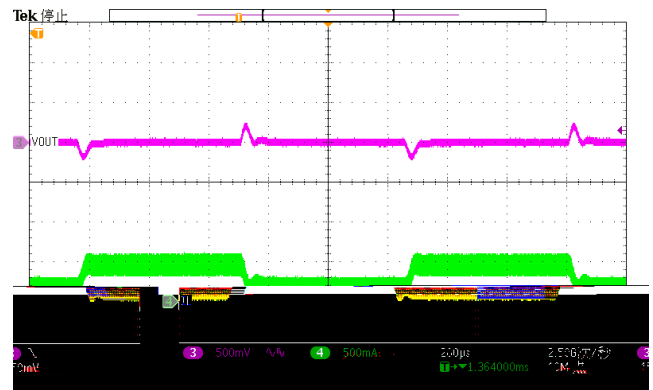
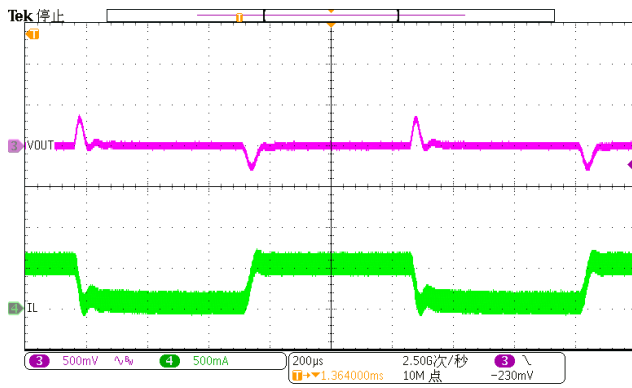
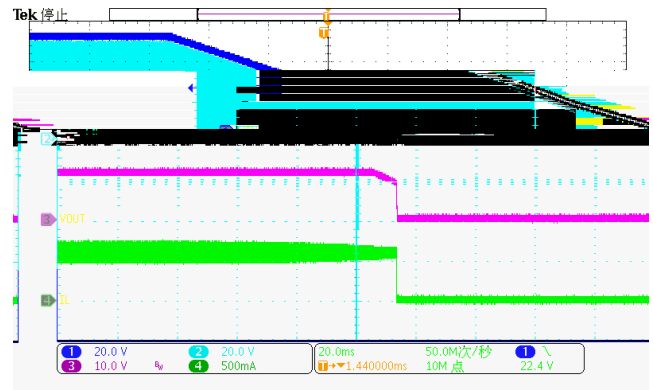
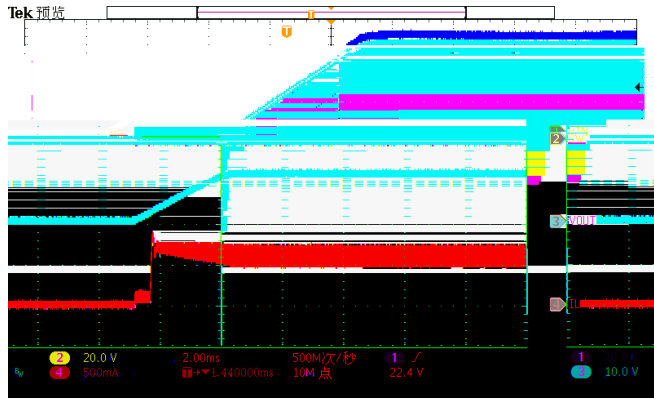
V _{OUT}	R ₅	R ₆

Under Voltage Lock-Out

W o &,TDS L Q

SCT2A11

Application Waveforms



Typical Application Circuit

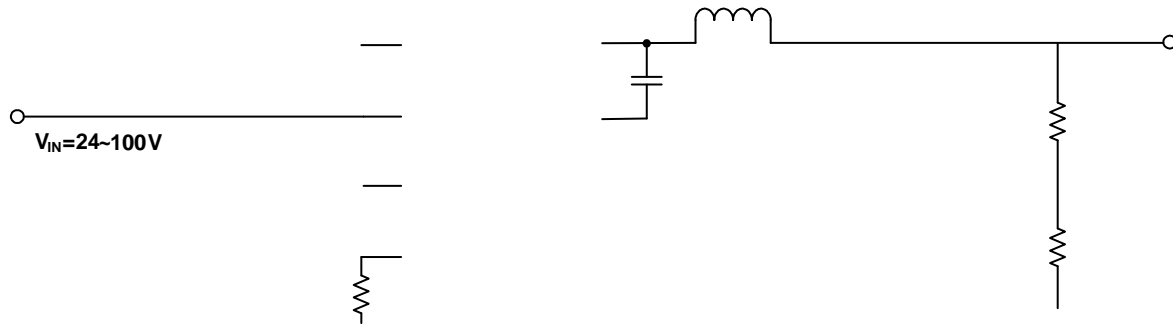


Figure 16. VOUT=3.3V, IOU=0.6A Application Circuit

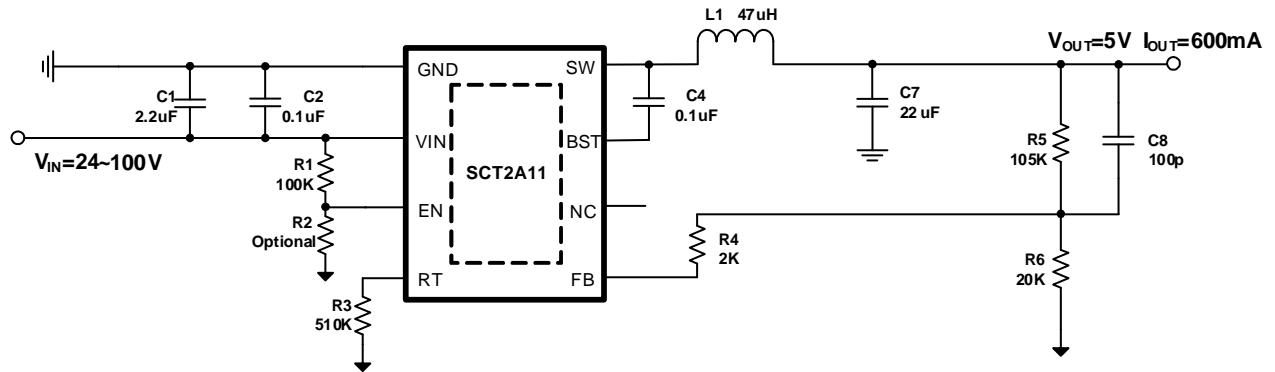


Figure 17. VOUT=5V, IOU=0.6A Application Circuit

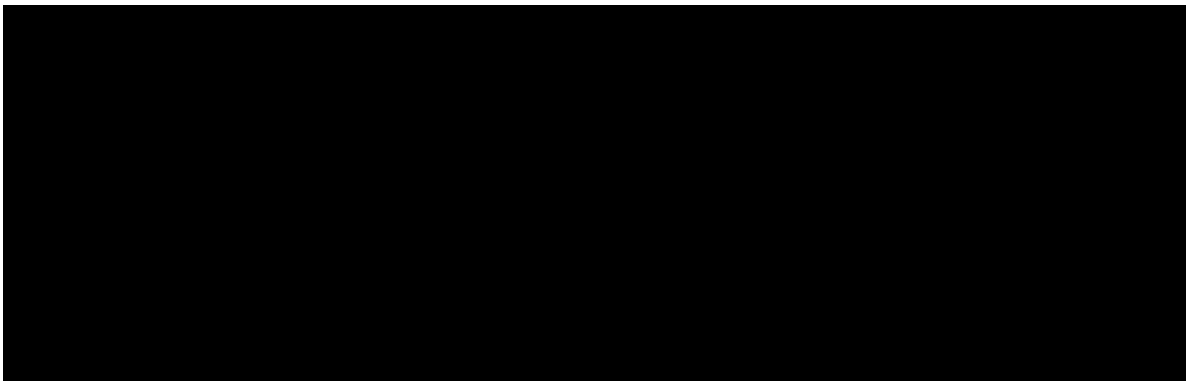
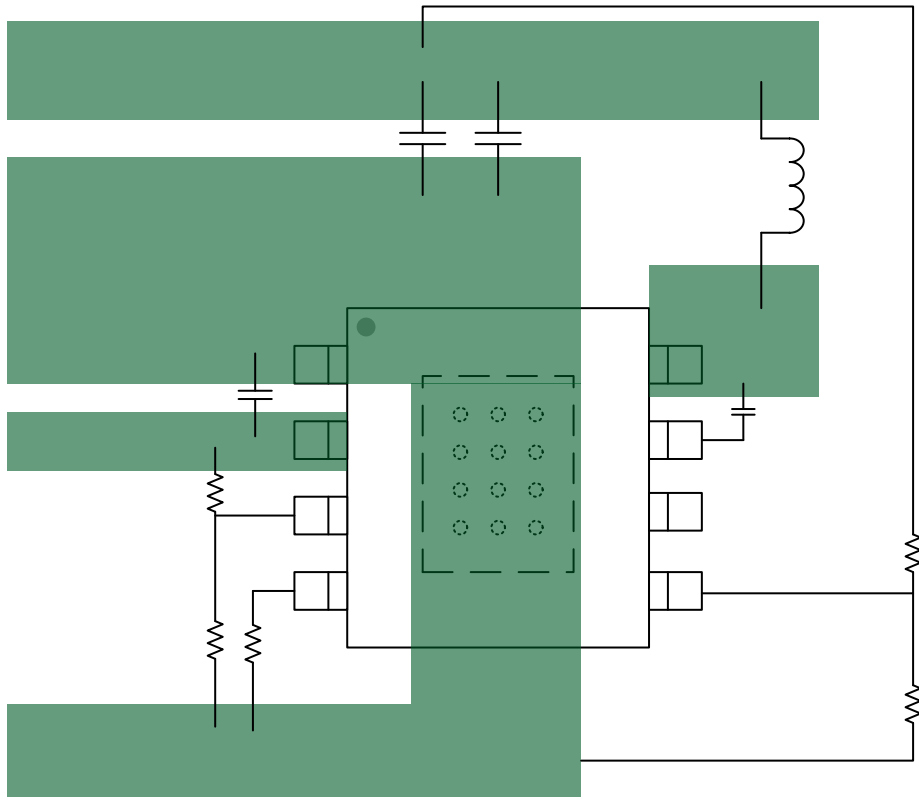
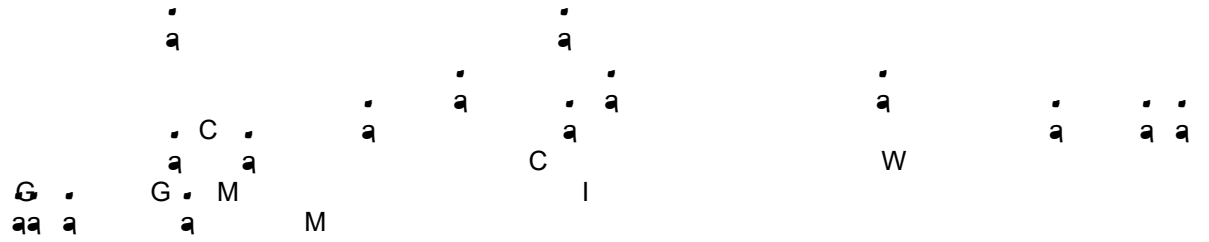


Figure 18. VOUT=12V, IOU=0.6A Application Circuit

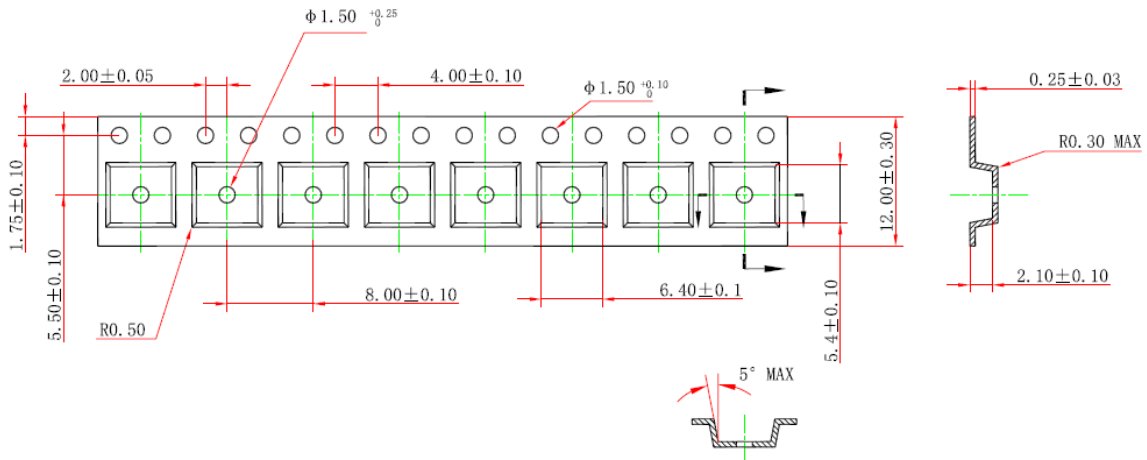
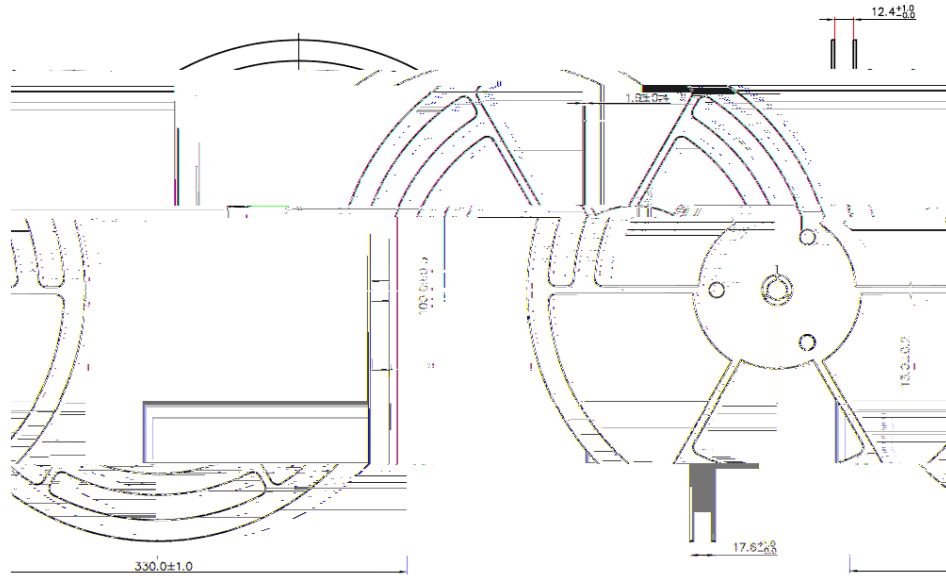
SCT2A11

Layout Guideline

- 1.
- 2.
- 3.
4. N
- 5.
- 6.
- 7.
- 8.
- 9.



SCT2A11



NOTICE: