



2.7V~20V, 15A Fully Integrated Synchronous Boost Converter Evaluation Board

FEATURES

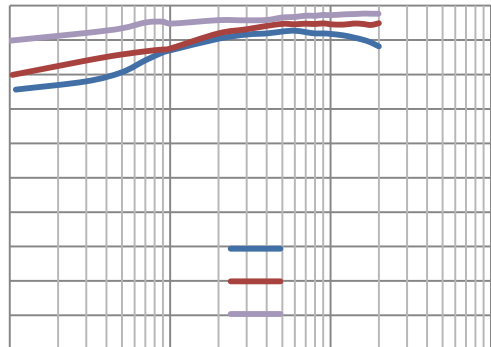
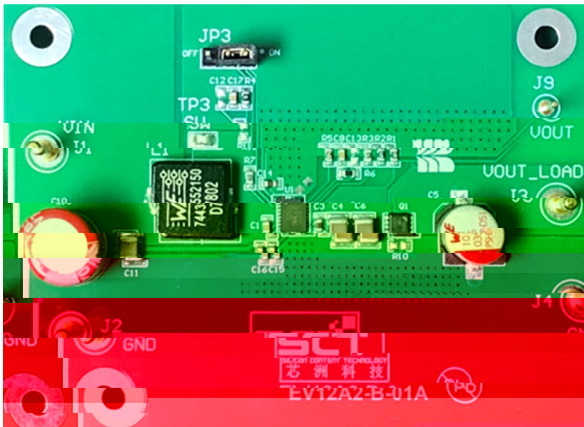
-
-
-
-
-
-
-
-
-
-
-
-
-
-

V_{ISO} UDQH 7KH FRQVWDQW RIIWLPH SHDN FKUHQW
 PRGHRSHUDWLRQSURYLGHVIDVWWUDQVLHQWUHVSRQVHDQG
 HDVHVORRSVWDELOLDWLRQ7KHGHYLFHIHDWVWVHQVLFQFOKH
 RYHUFKHUHQW SURWHFWLRQ RWSW RYHU YROWD
 SURWHFWLRQ DQG WKHUPDO VKWGRQ 7KH 0.5V
 DYDLDEOH LQ D VSDFHVDYLQJ SLQ 1
 PPPPSDFNDH

7KLV KHUV MGH GHVFULEHV WKH FKDUDFWHULVWLEV
 RSHUDWLRQ DQG WKH KH RI WKH

YDOHWLRQ URGHX LQFOXGLQJ VSHFLILFDWLRQV
 PERFORMANCE SUMMARY
 GLDDPELOORIPDWHULDOVDQGWKHERDUGODRW

Specifications are at TA = 25°C

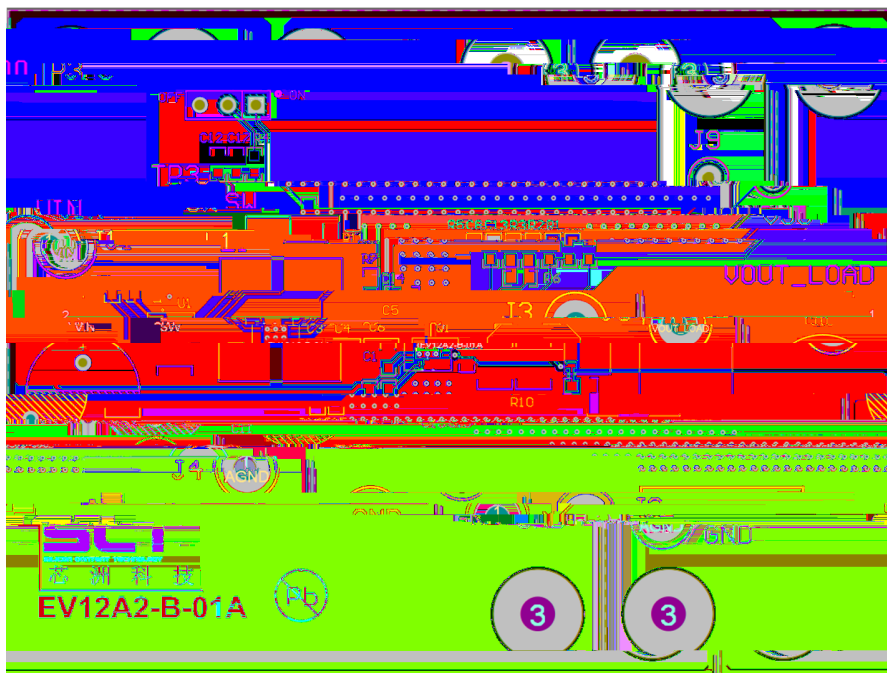
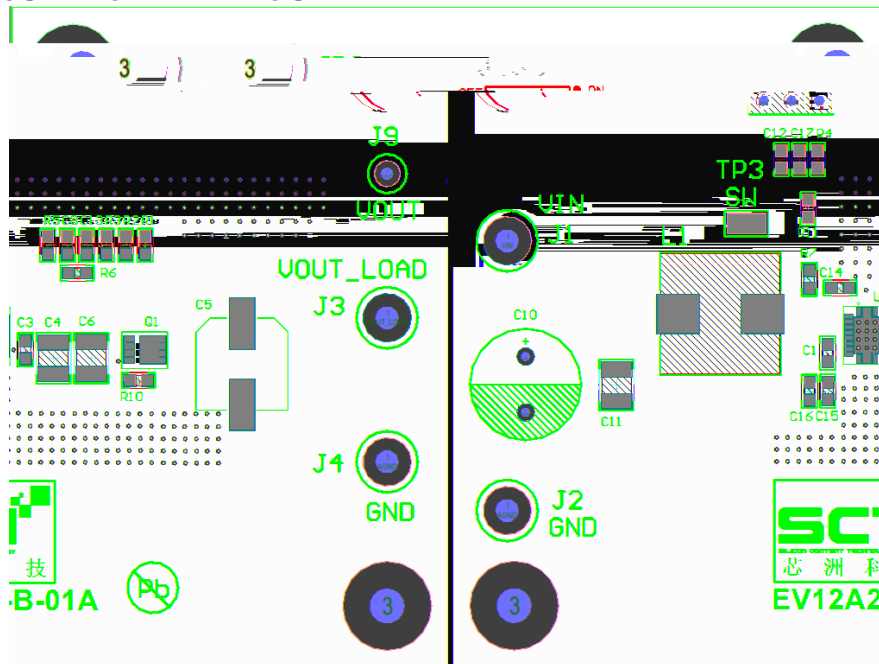




QUICK START PROCEDURE

•

PRINTED CIRCUIT BOARD LAYOUT



30W



OPTIONAL MODIFICATION

-
-
-
-
-

Table 3. R_{FSW} Value for Common Switching Frequencies
($V_{in}=3.6V$, $V_{out}=15V$, Room Temperature)

-
-

Table 4. R_{LIM} Value for Inductor Peak Current
($V_{in}=3.6V$, $V_{out}=15V$, $L=1.5\mu H$, Room Temperature)

-

Table 5. Feedback Resistor R_3 R_4 Value for Output Voltage
(Room Temperature)

