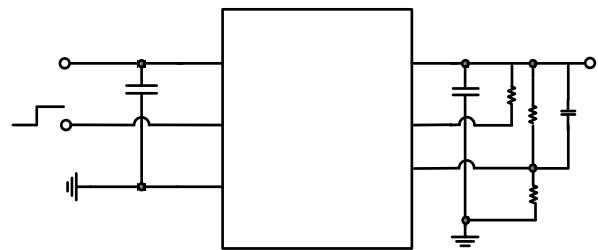
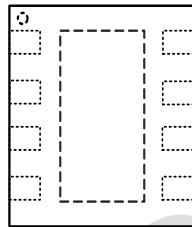


2.2V-5.5V V_{in} , 1A, 8 μ A I_Q , Low-Dropout Regulator

SCT CONFIDENTIAL



CfXYfUVY8Y W	Ci hdi h Jc hU Y	DUW_U Y	DUW_U Y AUf_b	D=BG	HfUbgdc fh AYX U Ei Ubhlm



G7H 5 E8H F

B5 A	B5 A	D=B : I B7H=CB

D5 F5 A H F	8 : B+CB	A-B	A5L	I B+I

D5 F5 A H F	8 : B+CB	A-B	A5L	I B+I

(1)

(2)

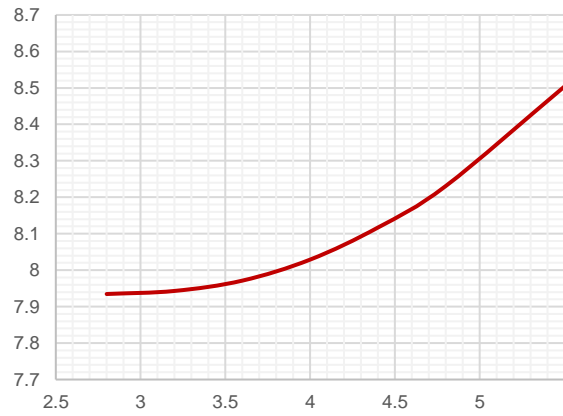
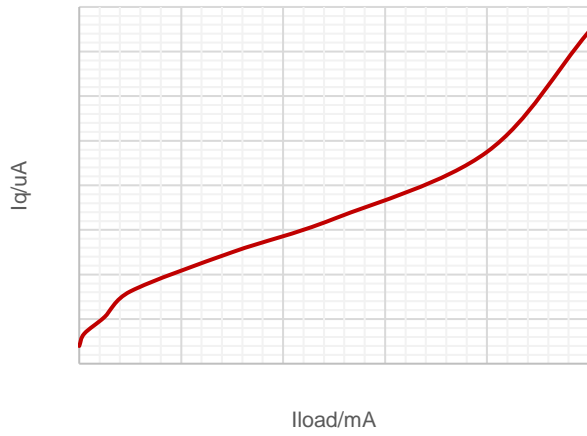
D5 F5 A H F	8 : B+CB	A-B	A5L	I B+I

(1)

(2)

SCT CONFIDENTIAL

SCT CONFIDENTIAL



SCT CONFIDENTIAL

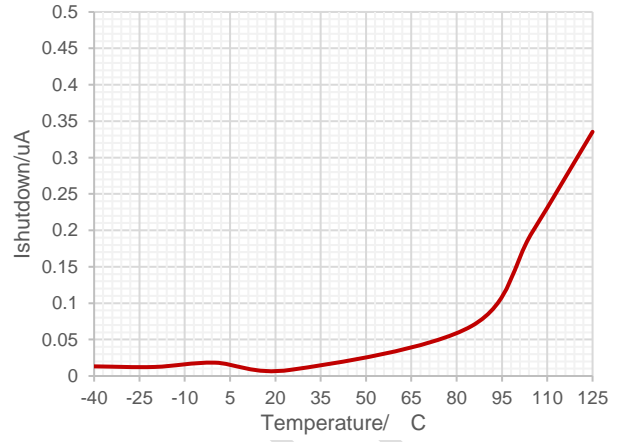
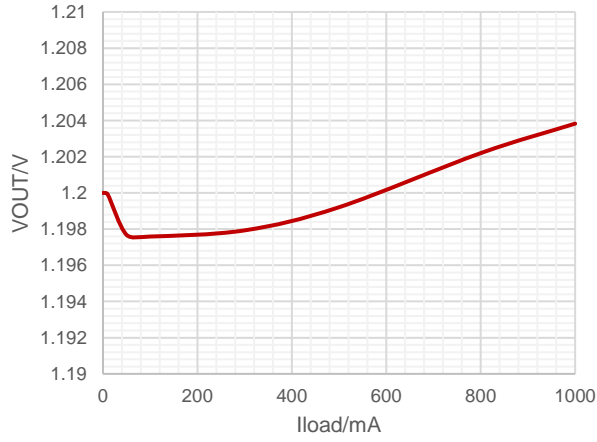


Figure 8. Shutdown Current vs Ambient Temperature

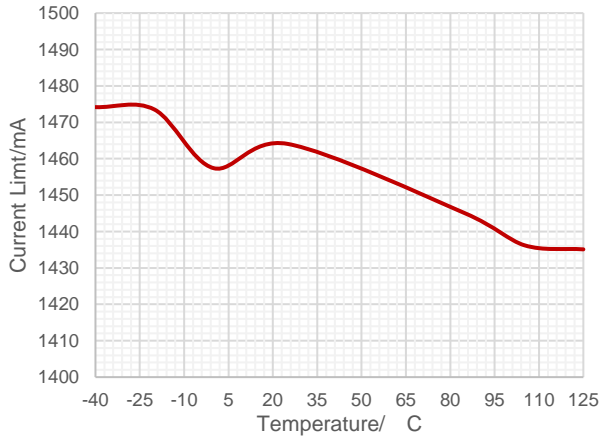


Figure 9. Output Current Limit vs Ambient Temperature

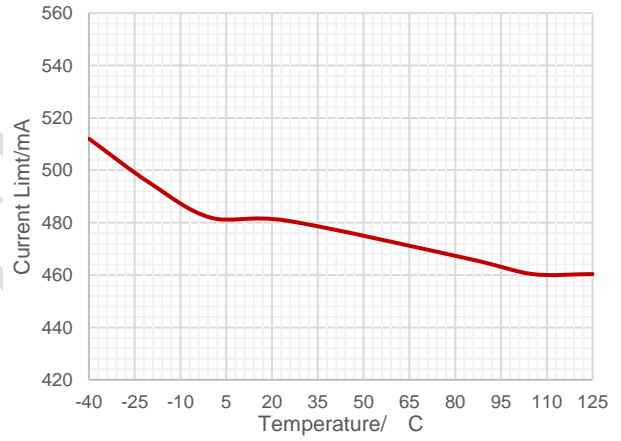
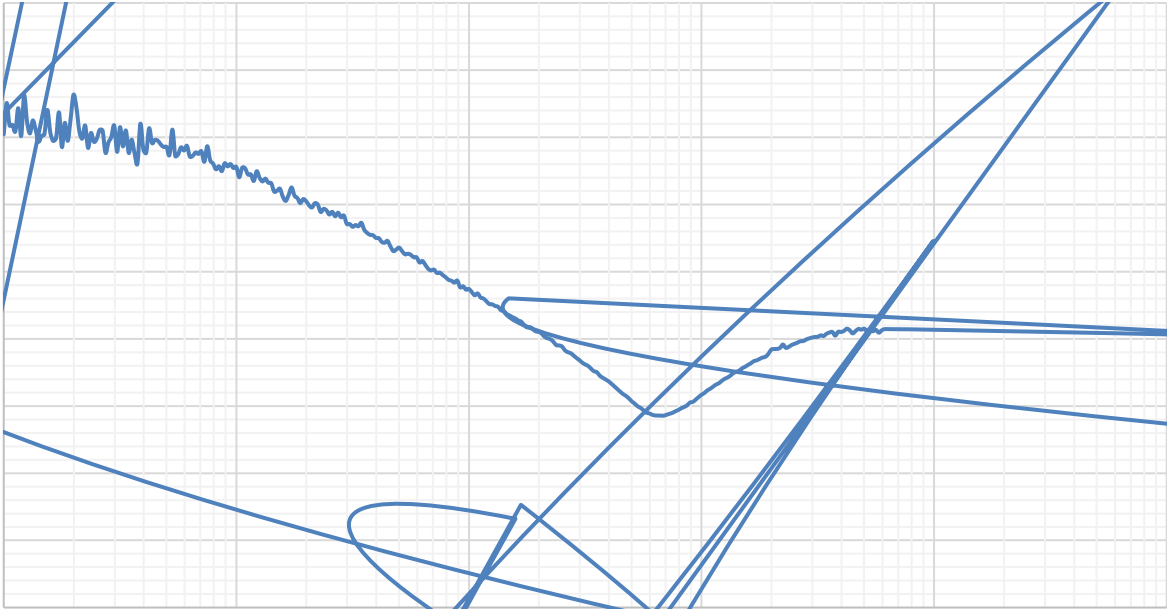


Figure 10. Short Current Limit vs Ambient Temperature



SCT CONFIL

SCT CONFIDENTIAL

SC

C Yf Yk

adjustable voltage

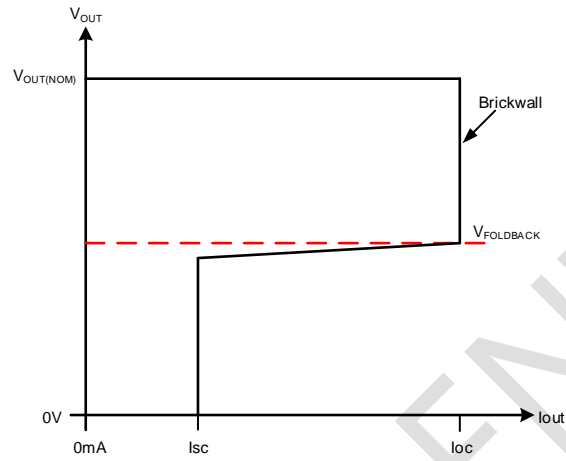
Ci hdi h bUVY

FY i UhYXCi hdi hJc hU Y

The SCT71010A00Q product provide adjustable output which can adjust the output voltage from 0.8V to 5V.

Ci hdi h8 gWUf Y

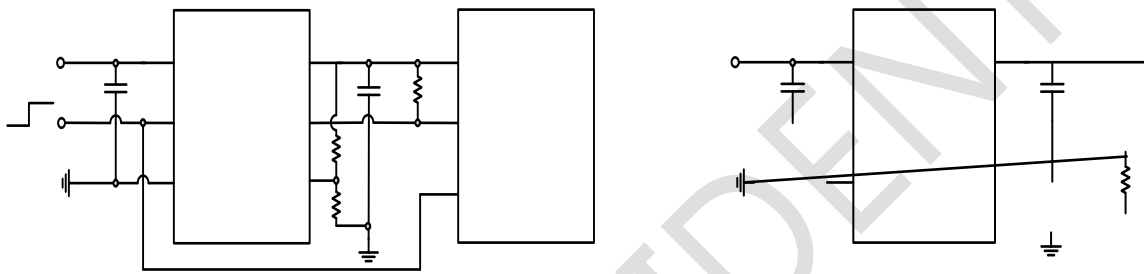
C Yf 7i ffYbh a hUbX: c XVUW_7i ffYbh a h



hYfbU Gc hGufh

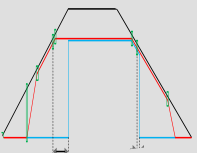


Dck Yf ccXUbX Dck Yf ccX 8 YUm

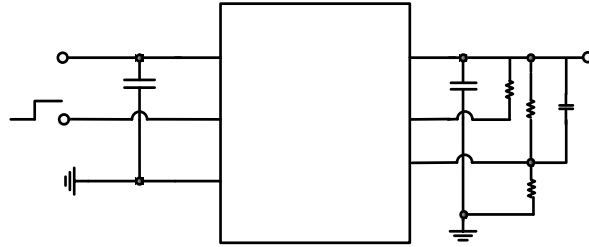


SCT CONFIDENTIAL

SCT CO



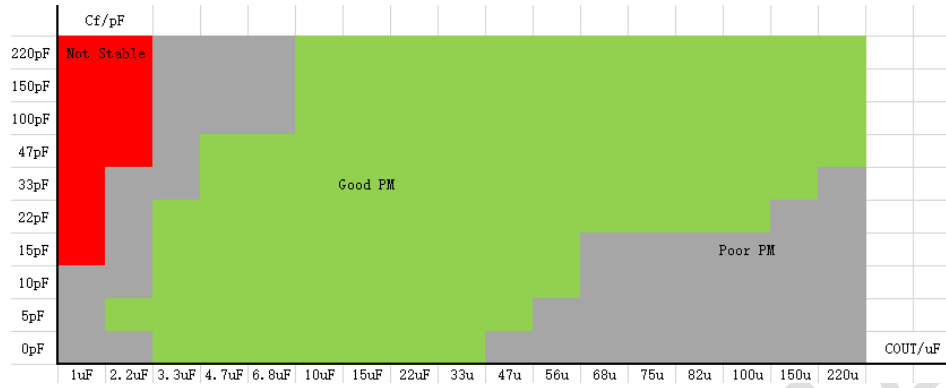
Hmd WJ Udd W hcb .



SCT CONFIDENTIAL

SCT CONFIDENTIAL

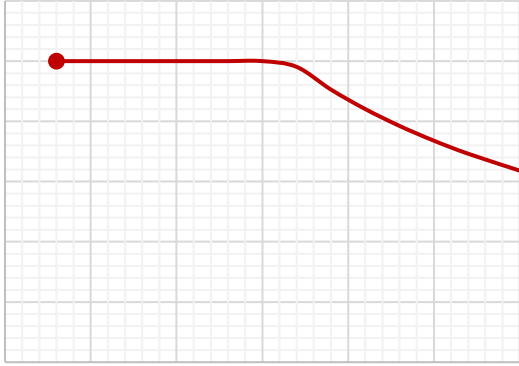
SCT CONFIDENTIAL



Dck Yf 8 gg dUhcb UbXH Yfa U DYf cfa UbW

H Yfa U DYf cfa UbW c 8 YfYbhDUWU Yg UgYXcb JA HYgh

DUWU Y	AU 5 ck UVYD8 K BchHf Yf HG8 JCI H1) J	AU 5 ck UVYD8 K H) °C	F 5S JA °C K

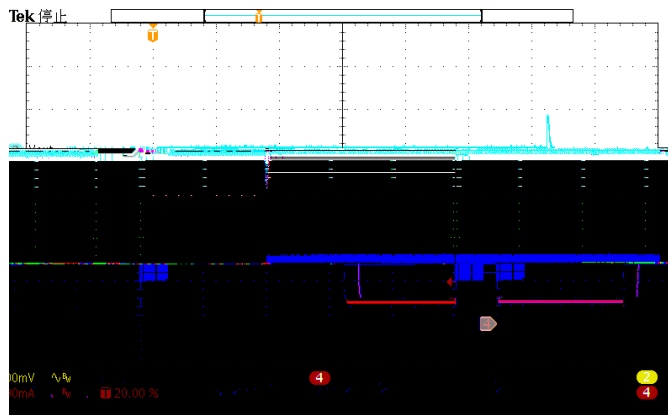
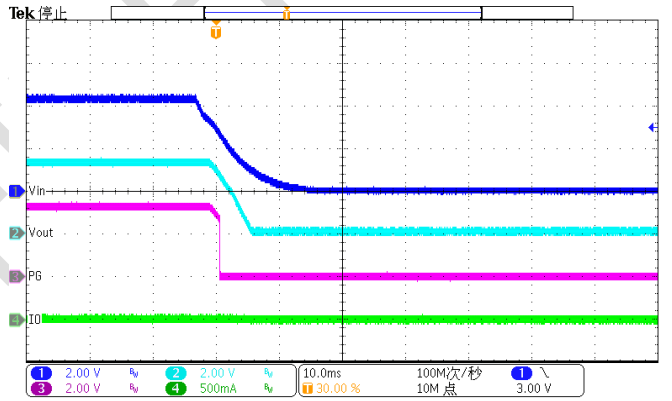
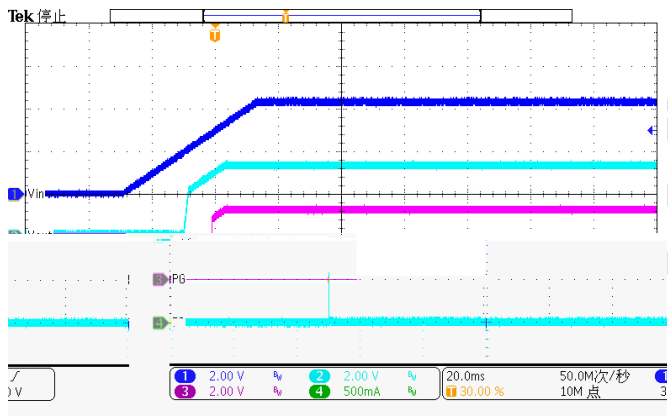
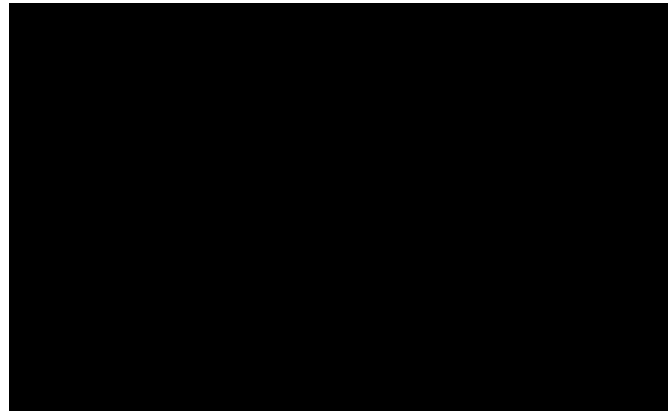
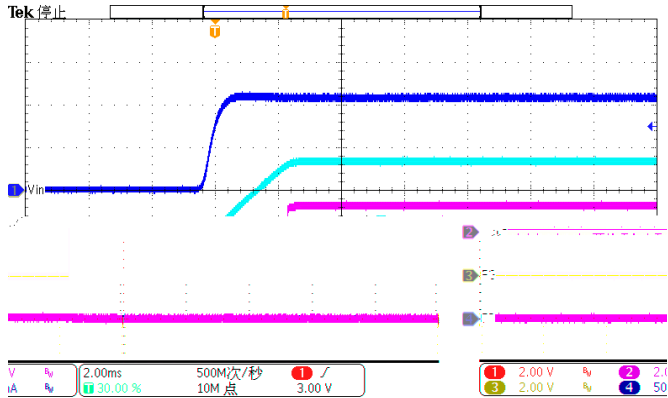


°C

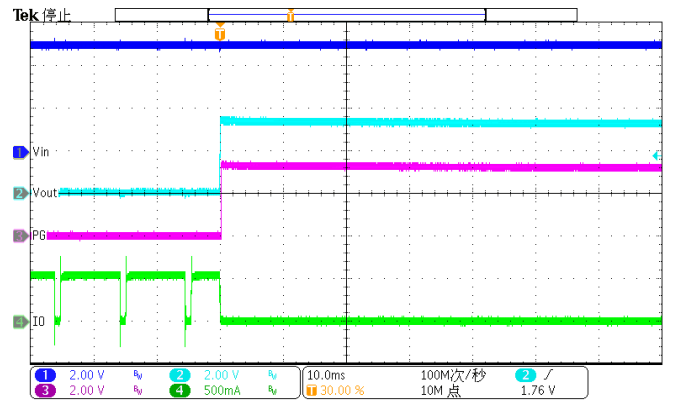
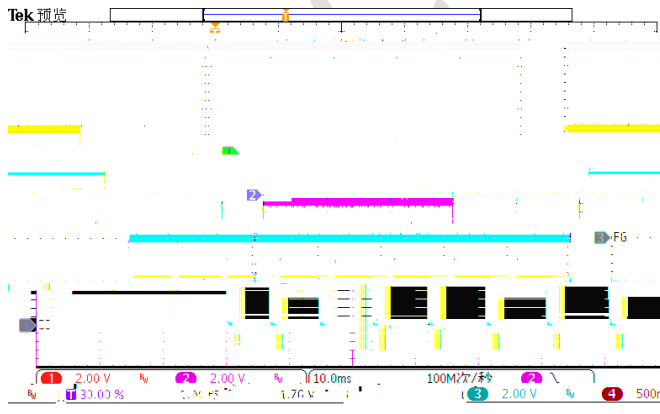
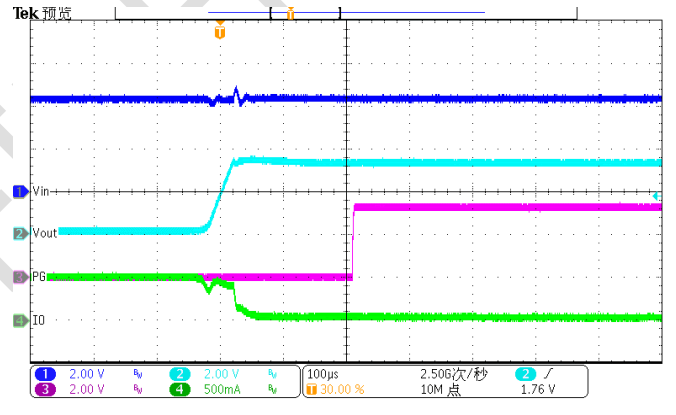
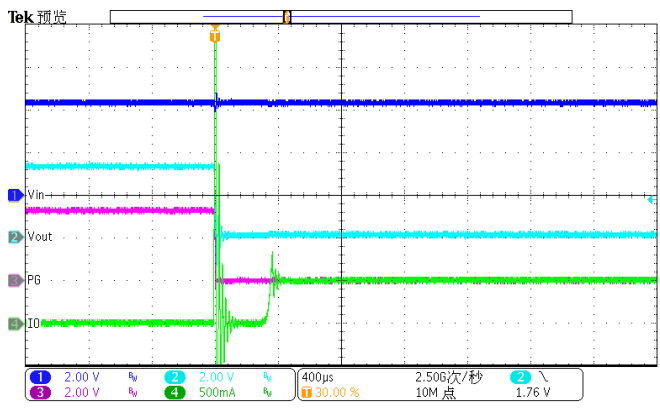
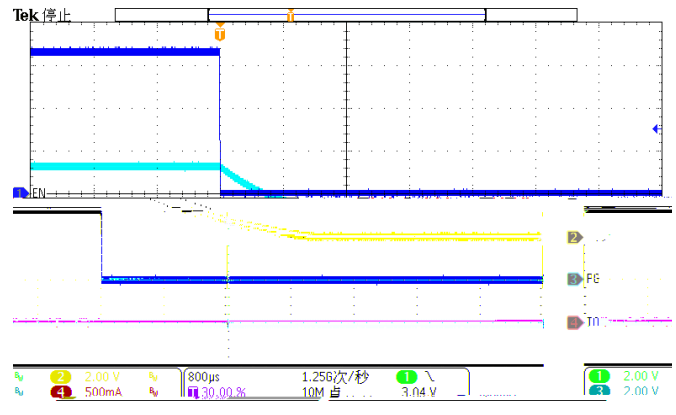
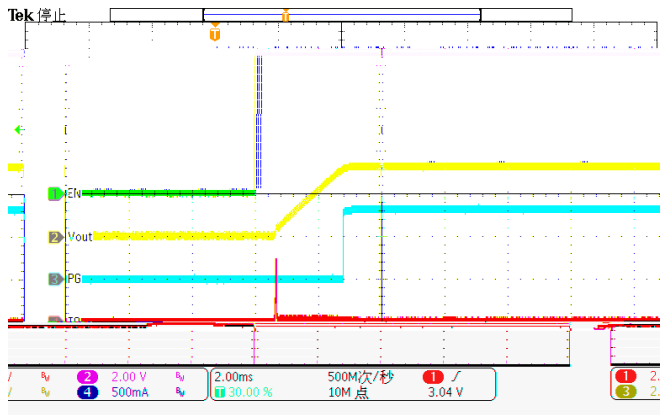
SCT CONFIDENTIAL

G7H 5 E Gyf Yg

5 dd W hcb K U Y cfa g



5 dd W hcb K U Y cfa g 7 cbhbi YX



SCT

SCT CONFIDENTIAL

SCT CONFIDENTIAL