

---

## 3V-40V Vin, 150mA, 2.5uA I<sub>Q</sub>, Low-Dropout Regulator

GFB F

EF D POA

±

±

B MDB PO A

---

**F POA P A**

Revision 1.0: Release to production.

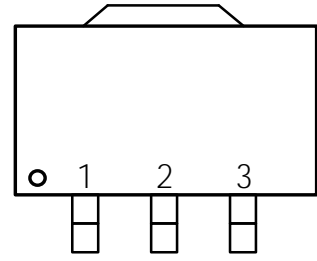
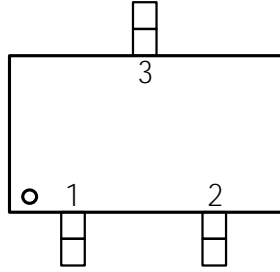
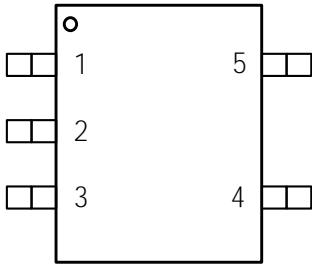
Revision 1.1: Update the thermal information and the thermal characteristic.

Revision 1.2: Update the thermal information and the thermal characteristic.

Revision 1.3: Update the TAPE AND REEL INFORMATION.

**EF DFP EF AOGP NB POA**

**ODPOG H B POA**



**A**

**OG OD PO A**

**P D GXX A**

|  |  |  |
|--|--|--|
|  |  |  |
|  |  |  |
|  |  |  |
|  |  |  |
|  |  |  |
|  |  |  |

**P D GXX A**

|  |  |  |
|--|--|--|
|  |  |  |
|  |  |  |
|  |  |  |
|  |  |  |

**P D GXX A**

|  |  |  |
|--|--|--|
|  |  |  |
|  |  |  |
|  |  |  |
|  |  |  |

**A**

**A**

**A**

---

FDPNNFOEFEP F B OHADPOE PO A

|  |  |  |  |  |
|--|--|--|--|--|
|  |  |  |  |  |
|--|--|--|--|--|

---

---

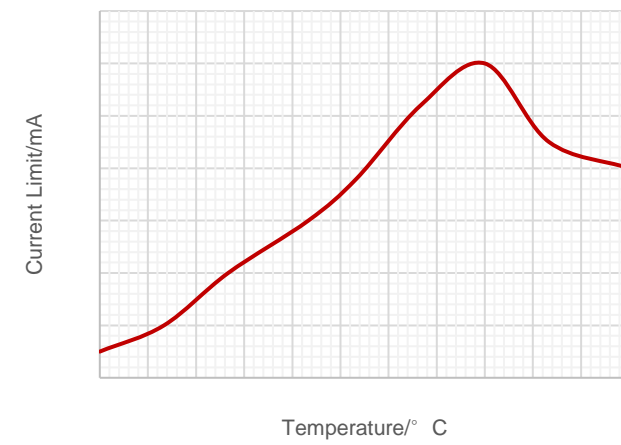
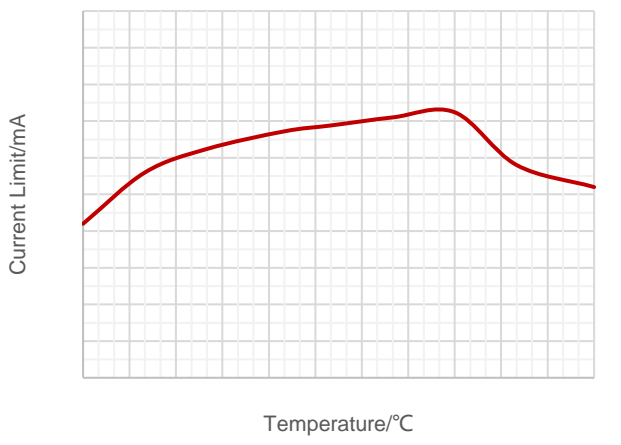
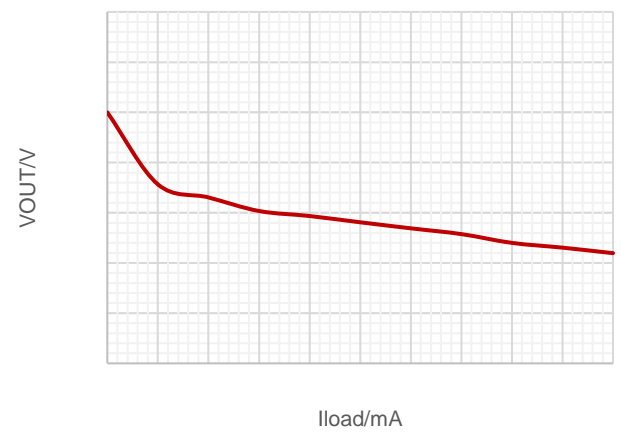
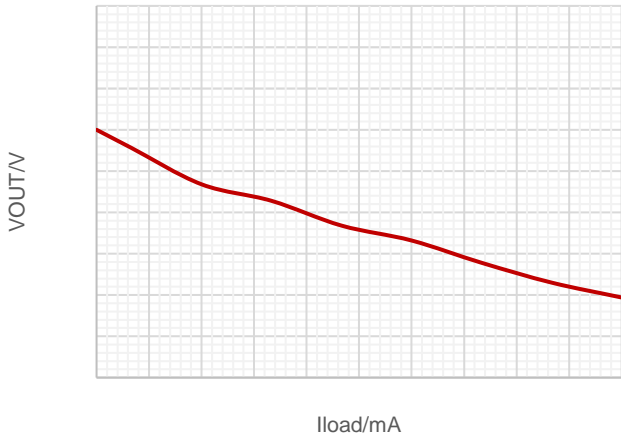
**FMFD   DBMDI B BD F   D A**

|  |  |  |  |  |
|--|--|--|--|--|
|  |  |  |  |  |
|  |  |  |  |  |
|  |  |  |  |  |
|  |  |  |  |  |
|  |  |  |  |  |
|  |  |  |  |  |
|  |  |  |  |  |
|  |  |  |  |  |
|  |  |  |  |  |

---

DBM DI B BD F D A

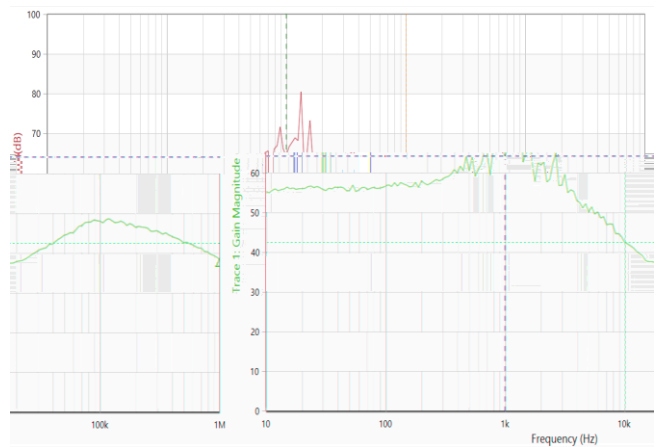
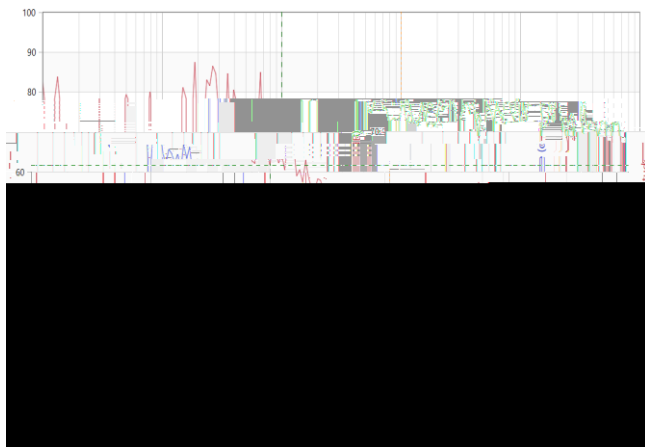
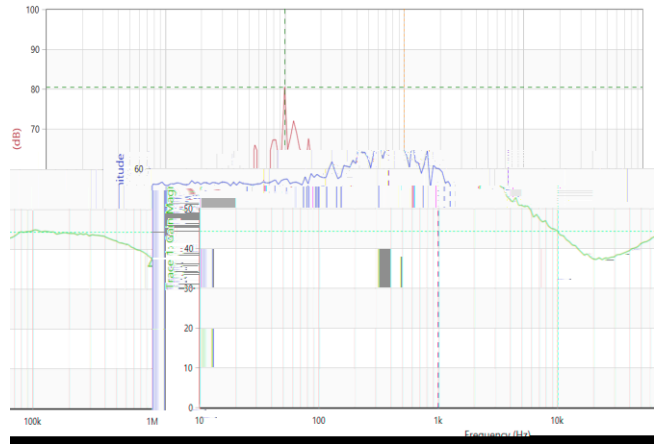
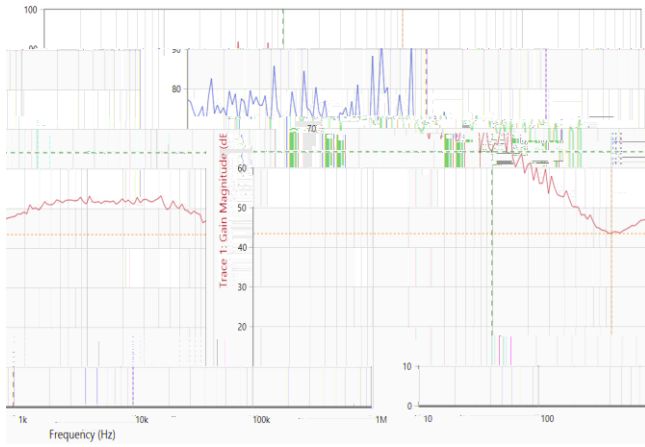
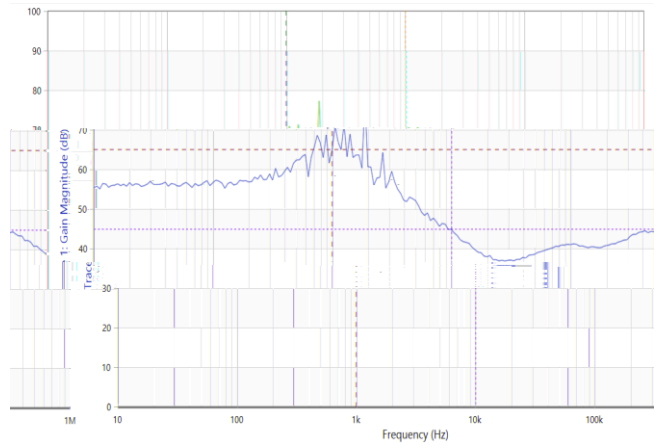
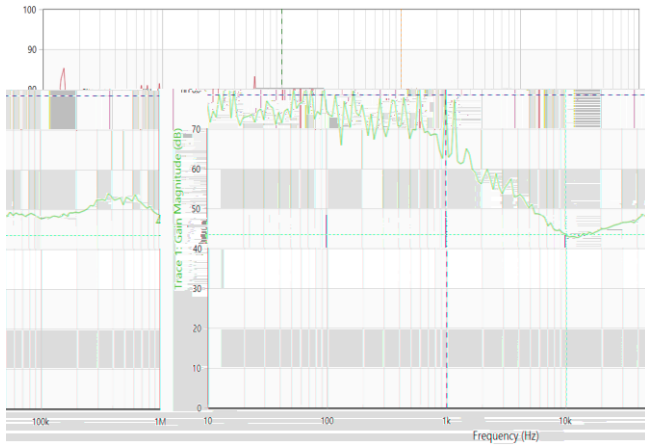
DBM DI B BD F D A A



A A A

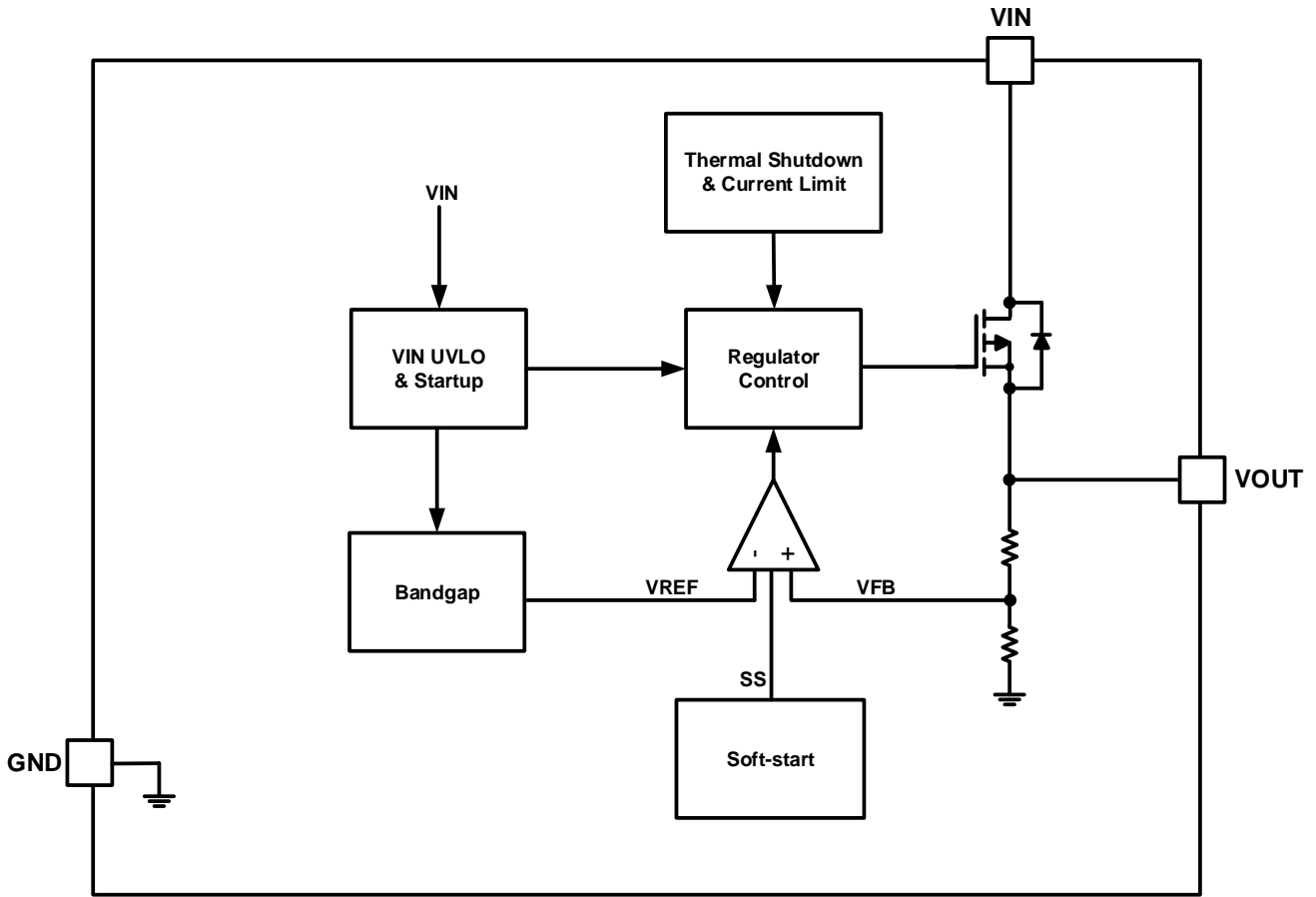


DBM DI B BD F D A A



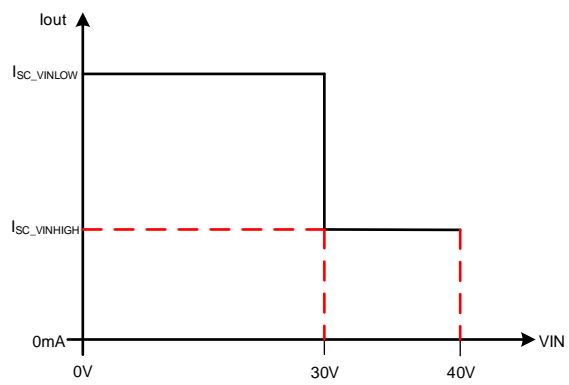
A

G OD POBMCMPDLÆ BH BNA

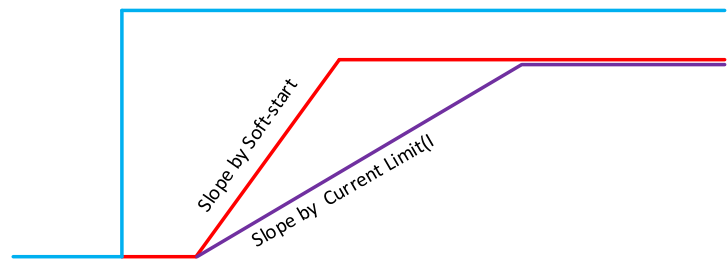


---

P F B POA

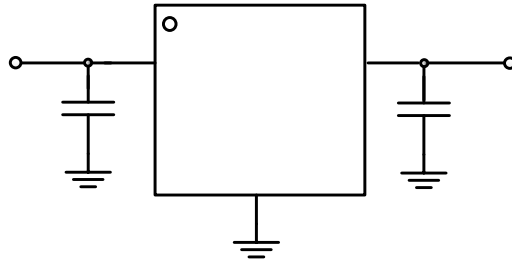


d ——— DD

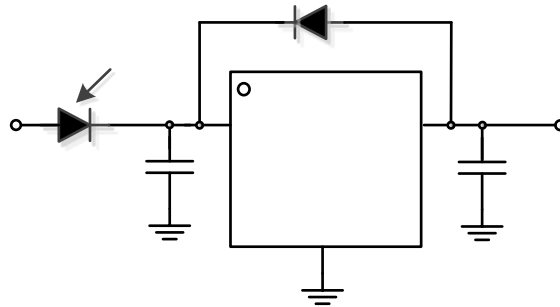


---

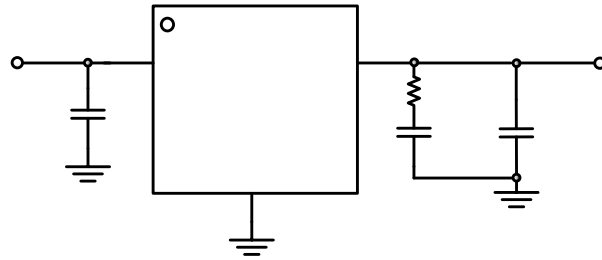
**B MDB POAOGP NB POA**



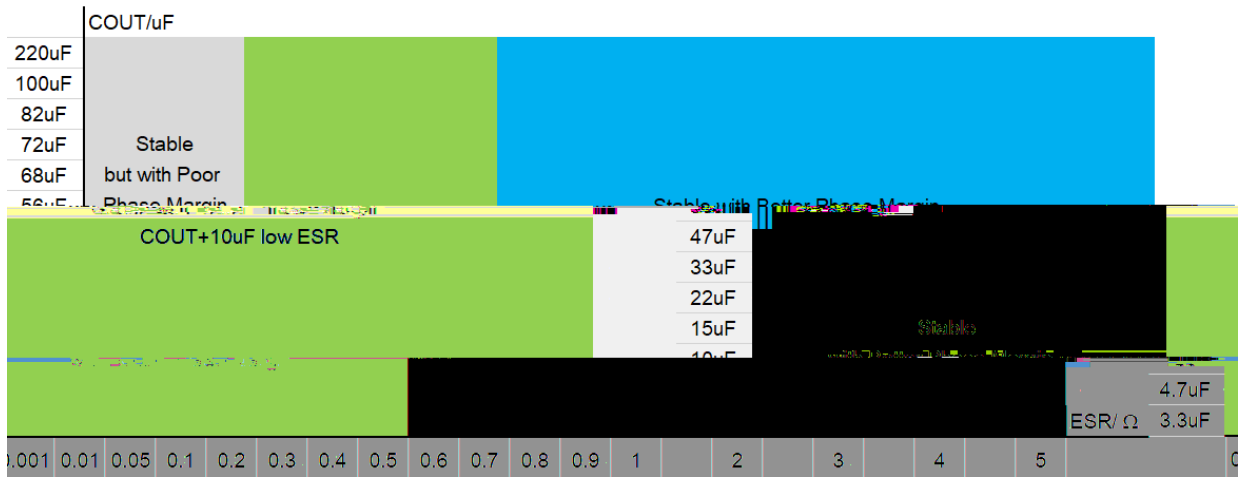
|  |  |
|--|--|
|  |  |
|  |  |
|  |  |
|  |  |
|  |  |
|  |  |
|  |  |



\_\_\_\_\_ |  
\_\_\_\_\_



|  |  |
|--|--|
|  |  |
|  |  |
|  |  |
|  |  |
|  |  |
|  |  |
|  |  |
|  |  |



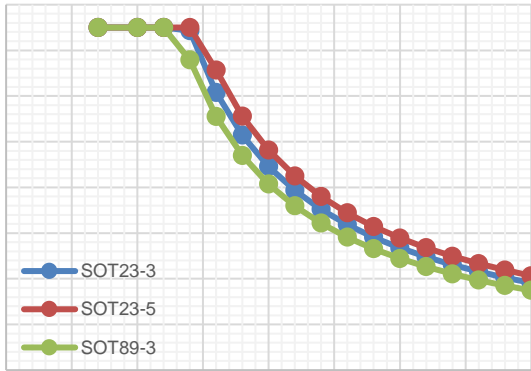
---

“ ”

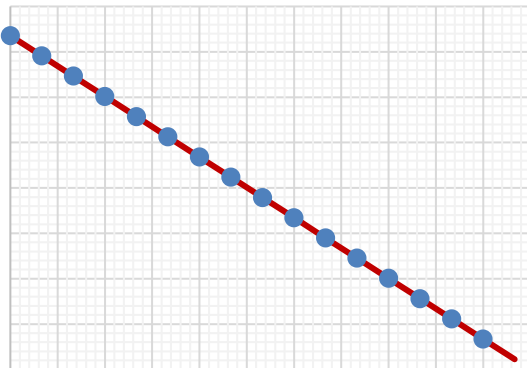
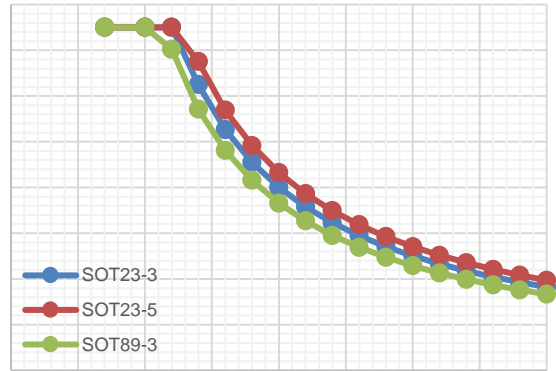
|  |  |  | °C |
|--|--|--|----|
|  |  |  |    |
|  |  |  |    |
|  |  |  |    |



I F N B M D I B B D F D A



VIN/V

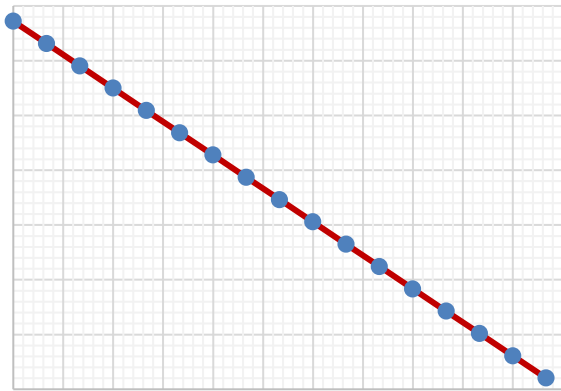


°C

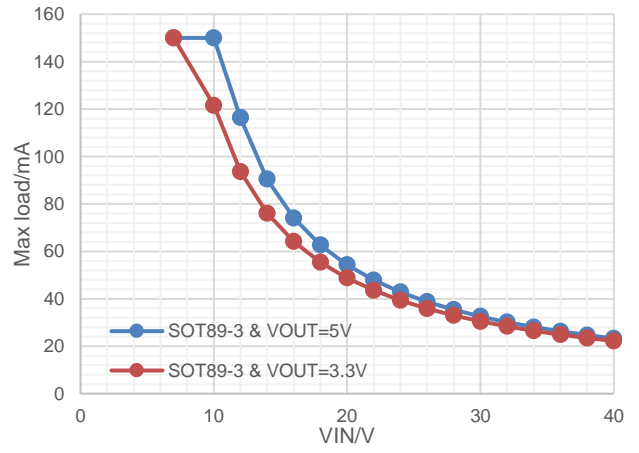
°C

°C

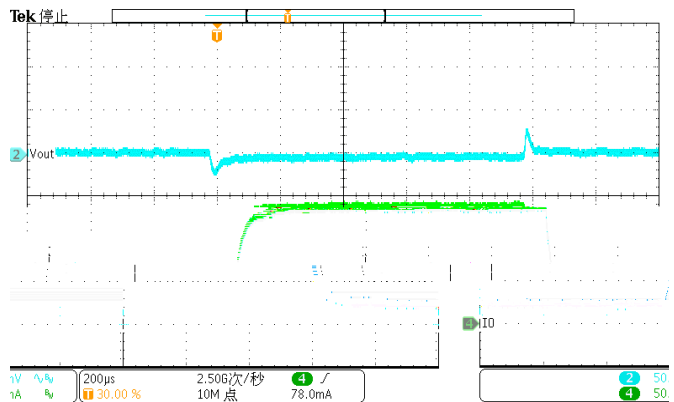
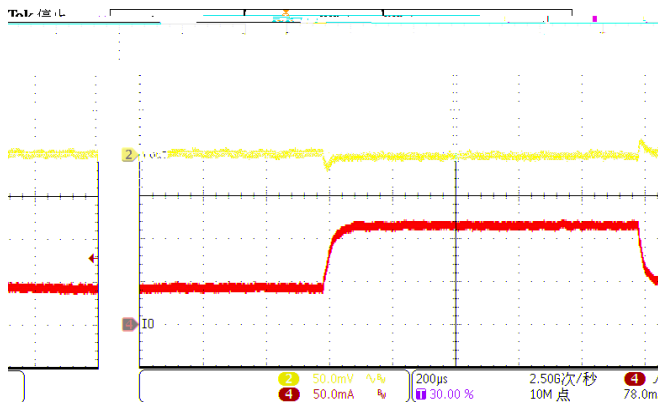
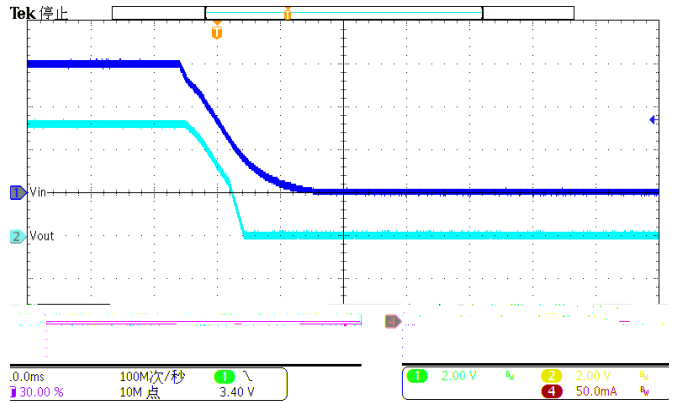
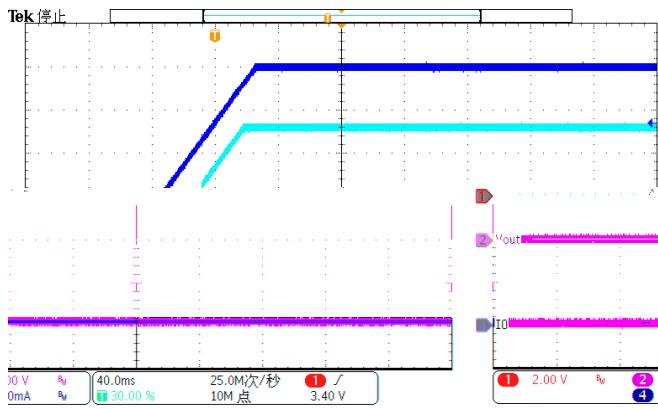
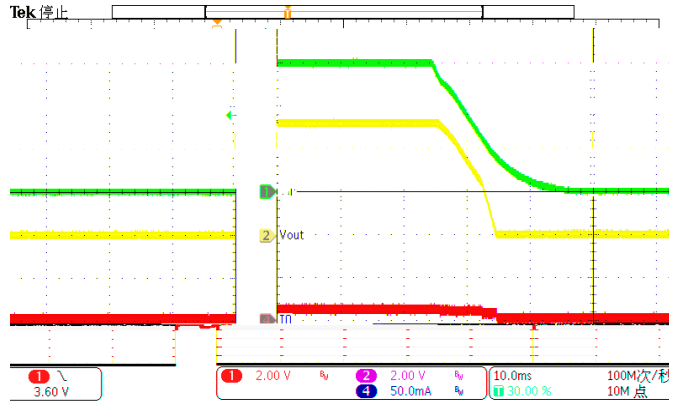
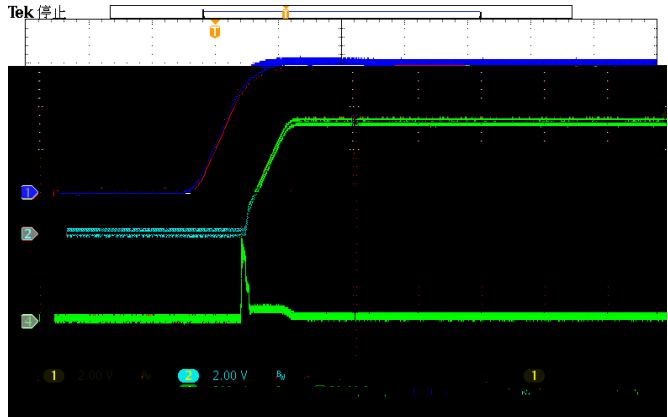
°C

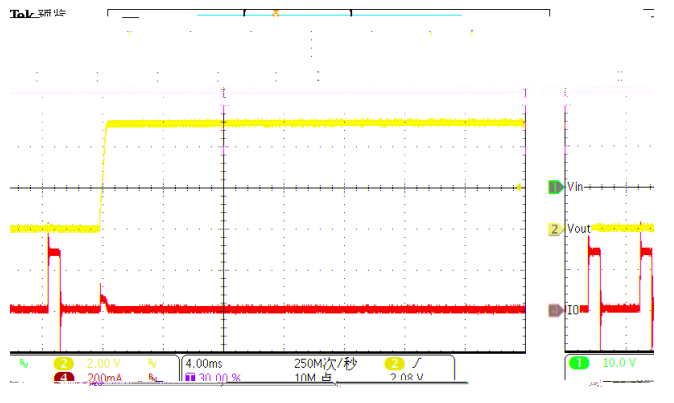
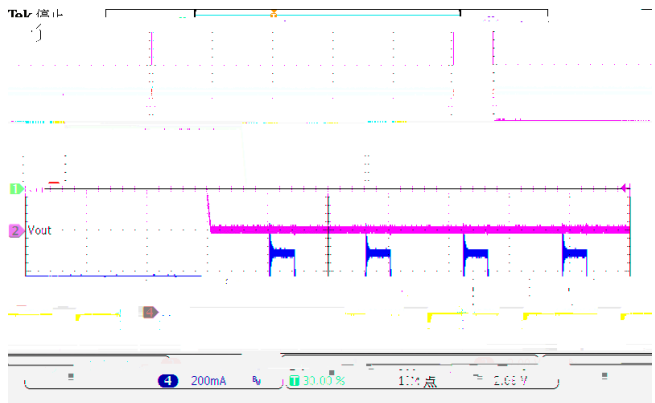
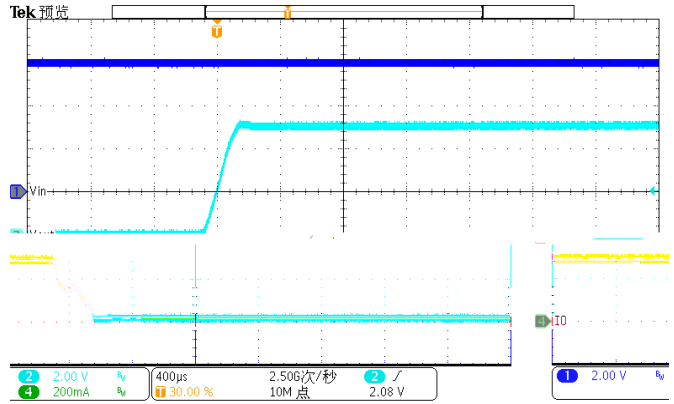
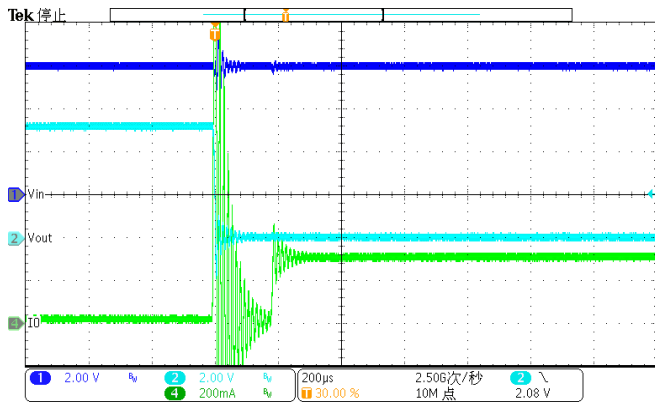
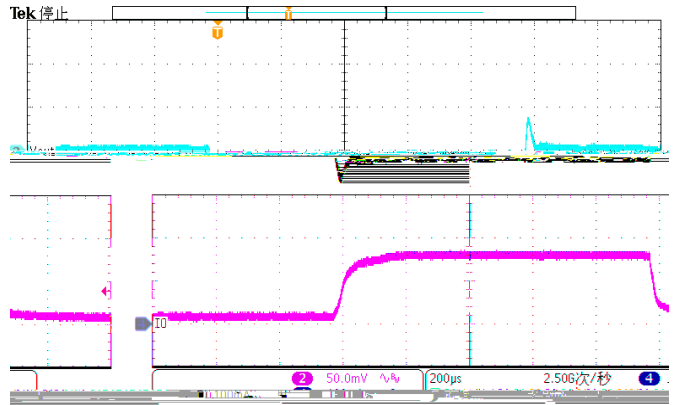
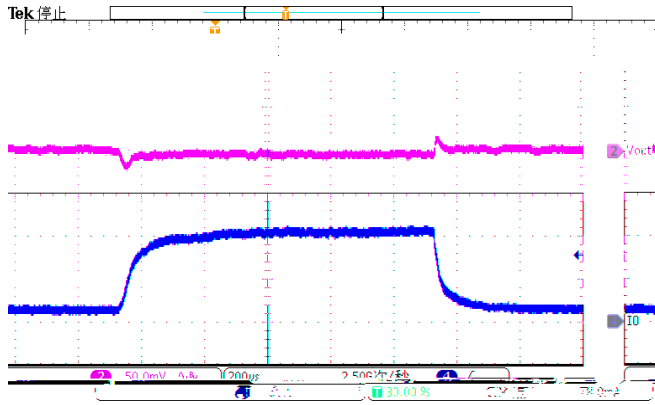


°C

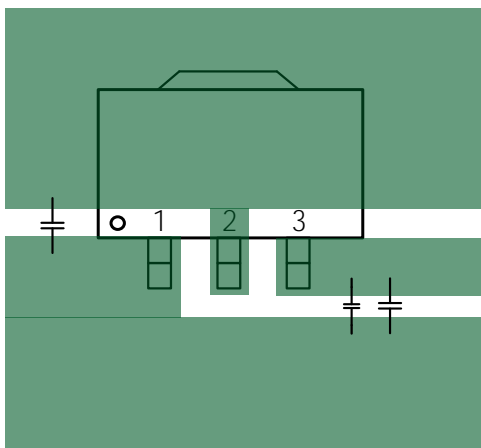
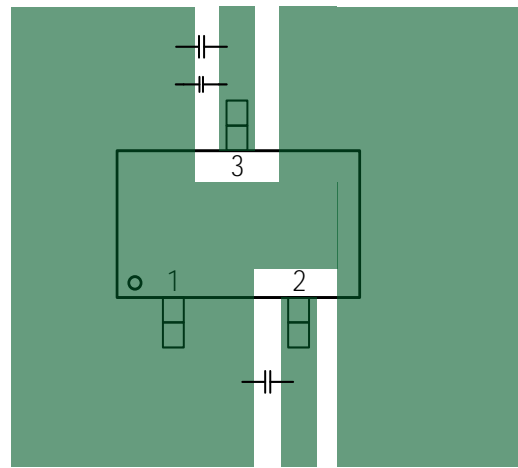
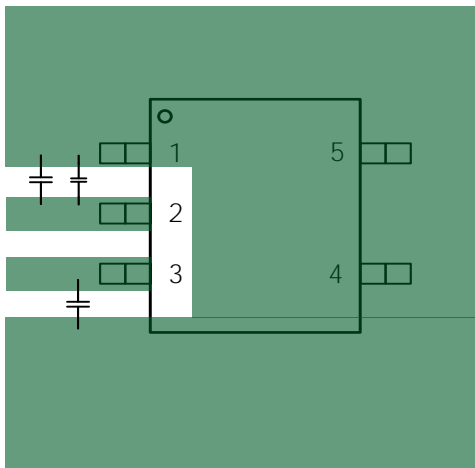


°C

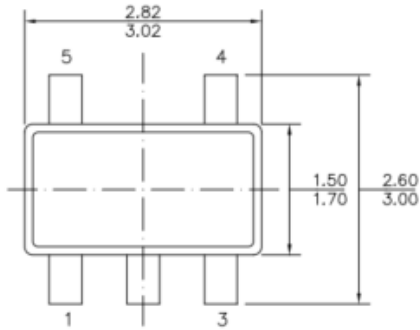




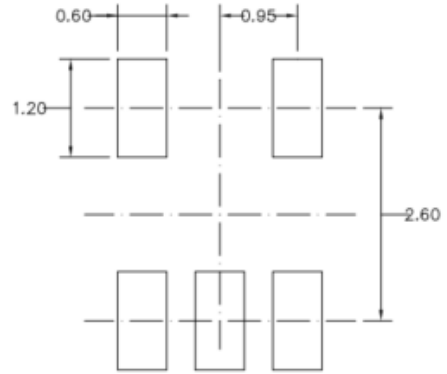
- 
- 1.
  - 2.
  - 3.
  - 4.
  - 5.



**BDLBHFAOGP NB PO**



**TOP VIEW**



**RECOMMENDED LAND PATTERN**



**FRONT VIEW**

**SIDE VIEW**

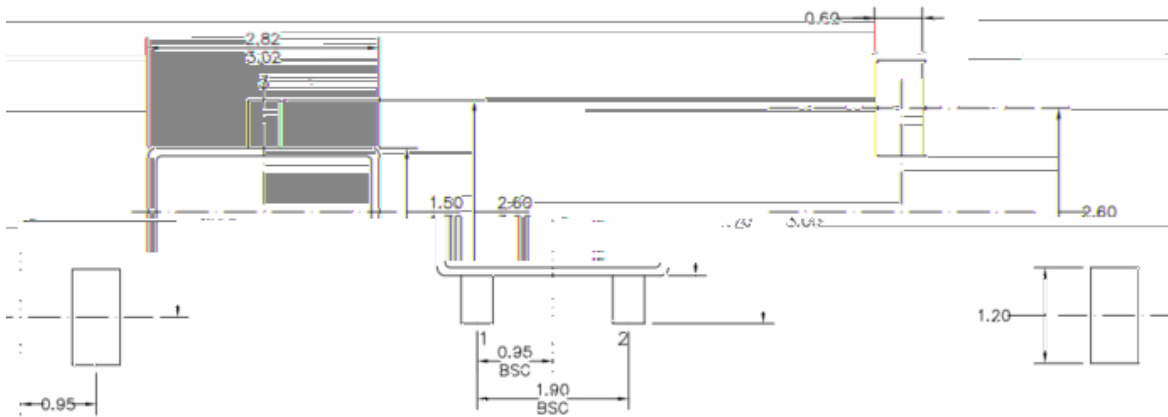
**NOTE:**

1) ALL DIMENSIONS ARE IN MILLIMETERS.  
 2) PACKAGE LENGTH DOES NOT INCLUDE MOLD FLASH, PROTRUSION OR GATE BURR.  
 3) PACKAGE WIDTH DOES NOT INCLUDE INTERLEAD FLASH OR PROTRUSION.  
 4) LEAD FORMATION SHALL BE:  
 AFTER FORMING SHALL BE 0.10 MILLIMETERS MAX.  
 5) DRAWING CONFORMS TO JEDEC MO-183 VARIATION A.  
 6) DRAWING IS NOT TO SCALE.

- 1.
  - 2.
  - 3.
  - 4.
  - 5.
  - 6.
- A**

**A**

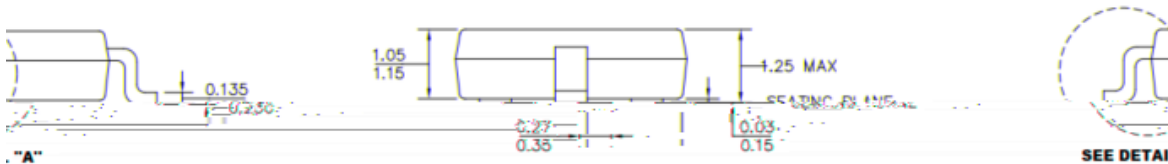
**BDLBHFAOGP NB PO**



**LEFT SIDE VIEW**

**TOP VIEW**

**RIGHT SIDE VIEW**

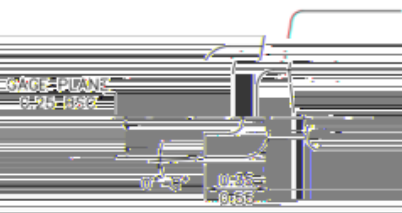


**SIDE VIEW**

**FRONT VIEW**

SEE DETAIL

ALL DIMENSIONS ARE IN MILLIMETERS.  
 DIMENSIONS DO NOT INCLUDE MOLD FLASH OR PROTRUSION OR GATE BURR.  
 DIMENSIONS DO NOT INCLUDE MOLD FLASH OR PROTRUSION.  
 DIMENSIONS SHALL BE 0.10 MILLIMETERS MAXIMUM.  
 DIMENSIONS SHALL CONFORM TO JEDEC MO-193.  
 DIMENSIONS NOT TO SCALE.



**DETAIL A**

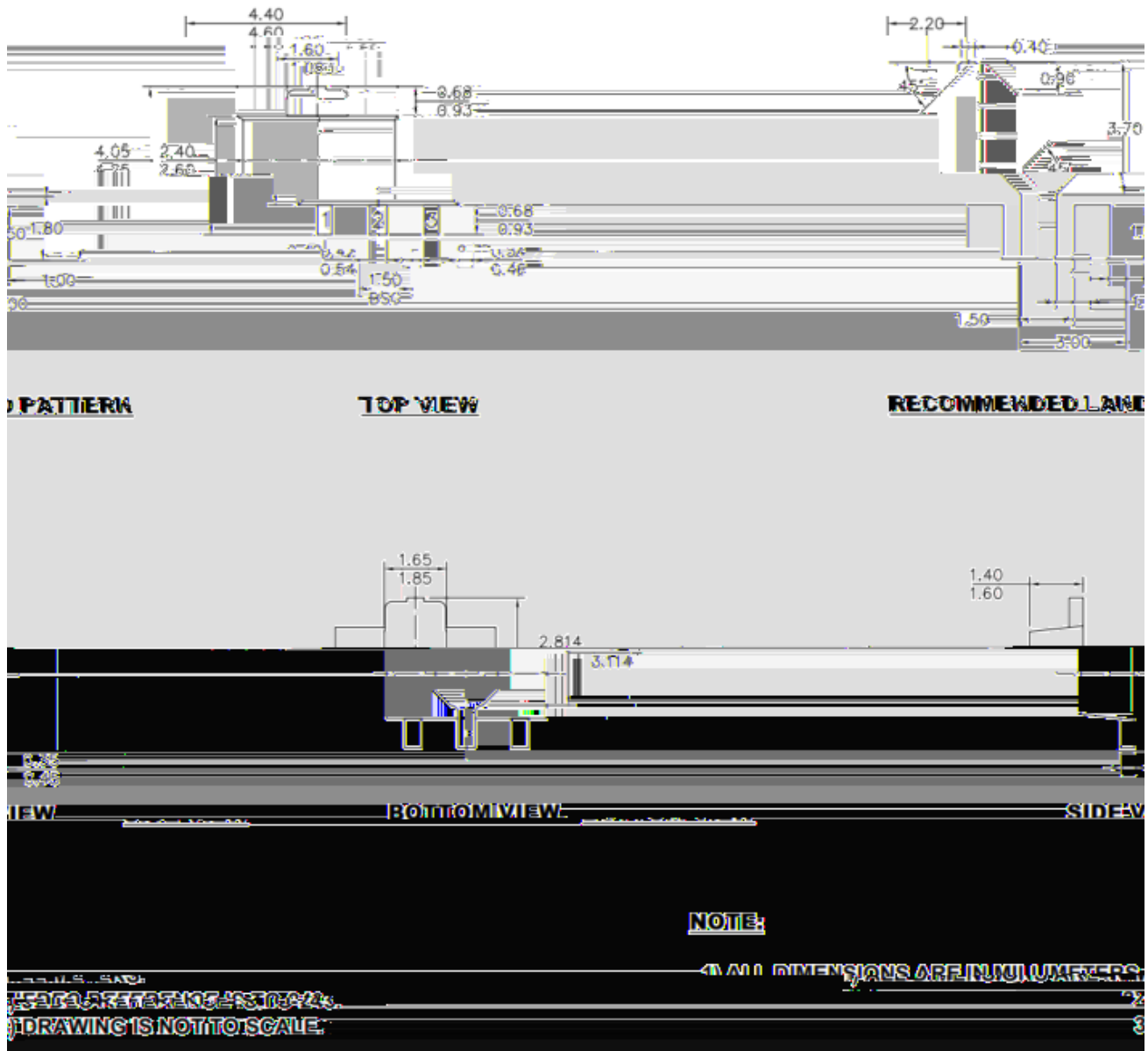
**NOTE:**

- 1) ALL DIMENSIONS ARE IN MILLIMETERS.
- 2) DIMENSIONS DO NOT INCLUDE MOLD FLASH OR PROTRUSION OR GATE BURR.
- 3) DIMENSIONS DO NOT INCLUDE MOLD FLASH OR PROTRUSION.
- 4) DIMENSIONS SHALL BE 0.10 MILLIMETERS MAXIMUM.
- 5) DIMENSIONS SHALL CONFORM TO JEDEC MO-193.
- 6) DIMENSIONS NOT TO SCALE.

- 1.
  - 2.
  - 3.
  - 4.
  - 5.
  - 6.
- A

A

**BDLBHFAOGP NB PO**



- 1.
- 2.
- 3.
- 4.
- 5.
- 6.

**A**

**A**



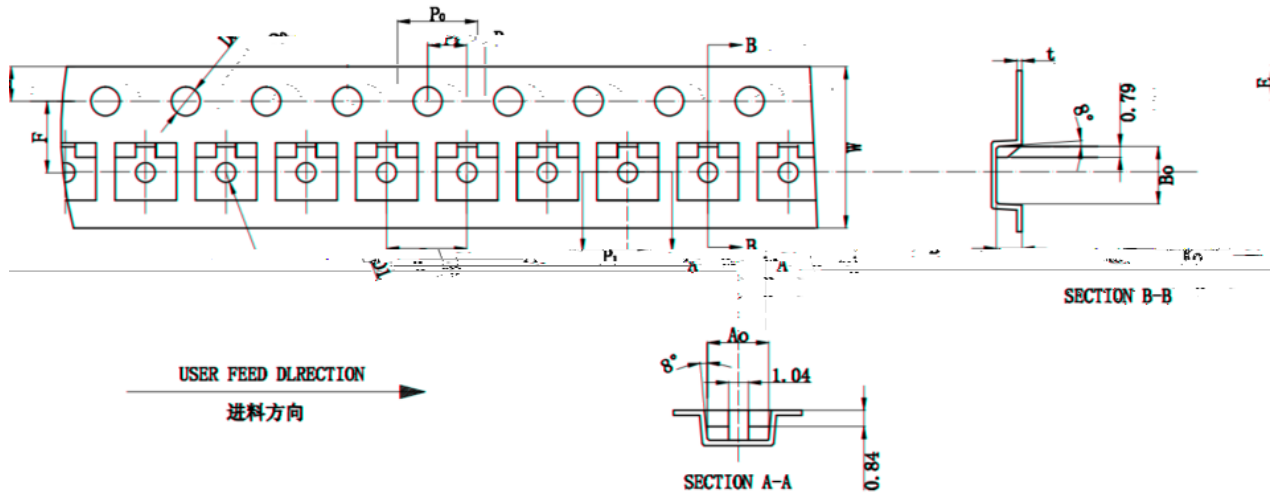
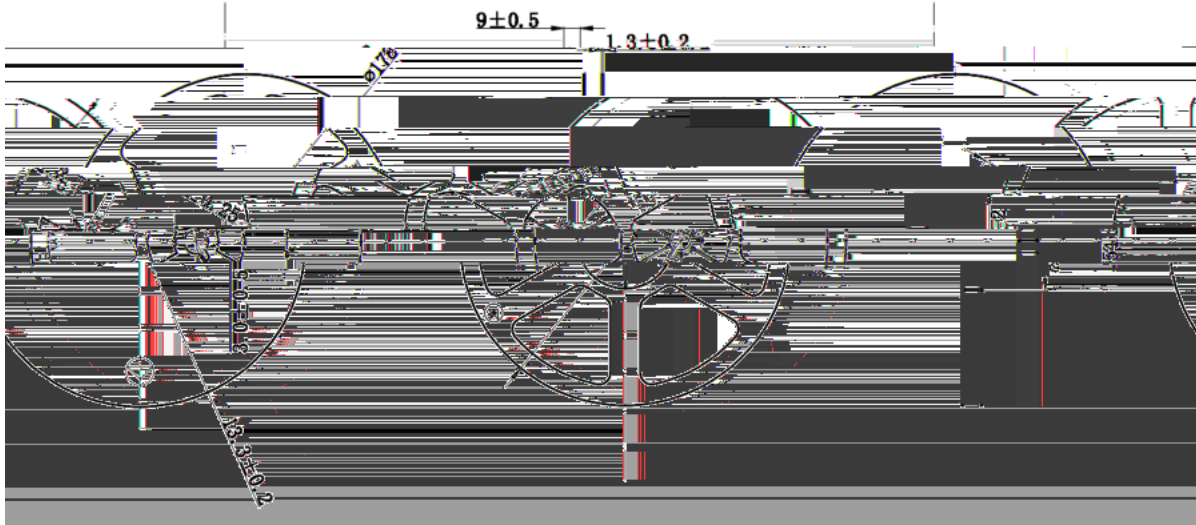
---

---

---

# B FBOEA FFMAOGP NB POA

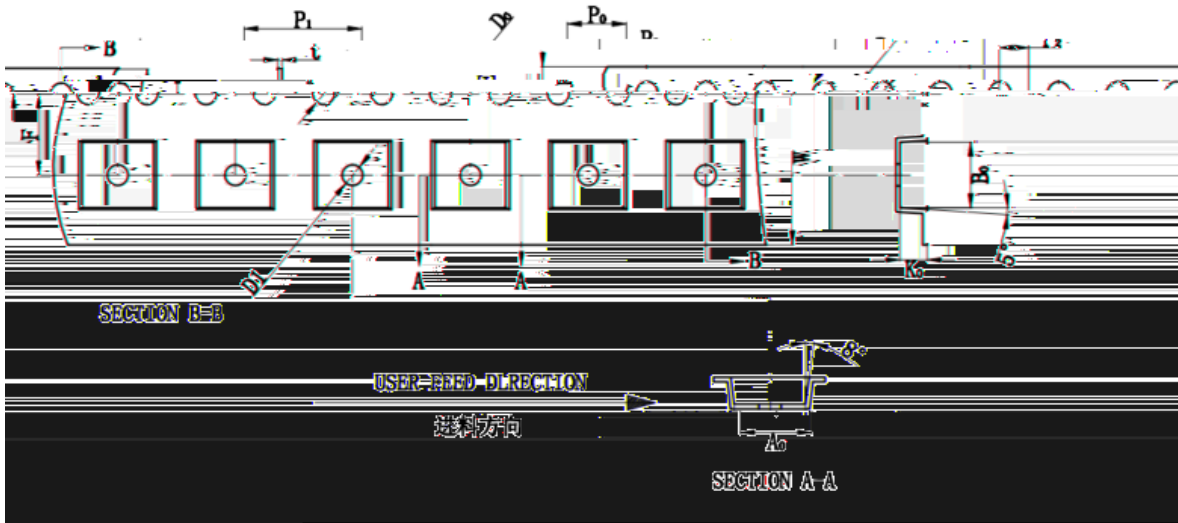
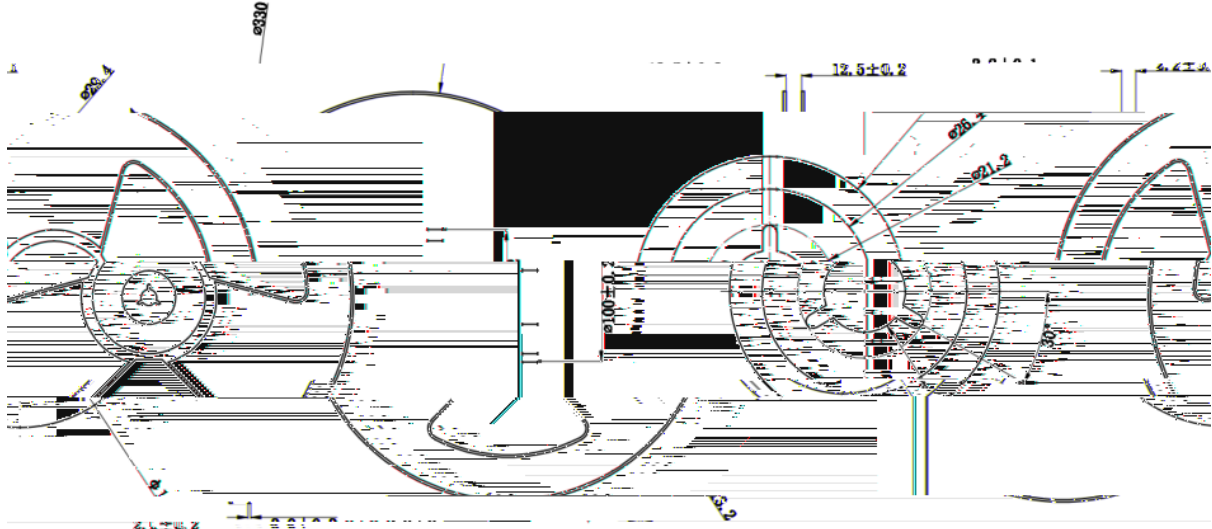
|  |  |  |
|--|--|--|
|  |  |  |
|  |  |  |



| ITEM | W   | A <sub>0</sub> | B <sub>0</sub> | K <sub>0</sub> | E   | F   | D <sub>1</sub> | D <sub>0</sub> | P <sub>0</sub> | P <sub>1</sub> | P <sub>2</sub> | t   |
|------|-----|----------------|----------------|----------------|-----|-----|----------------|----------------|----------------|----------------|----------------|-----|
| ITEM | ... | ...            | ...            | ...            | ... | ... | ...            | ...            | ...            | ...            | ...            | ... |

- 备注:
- 任意10个齿轮的累计误差不得超过 $\pm 0.2\text{mm}$
  - 材料厚度以载带边缘测量为准;
  - 载带长度方向100mm距离的非平行度不得超过1mm; 超过250mm不计算累计误差;
  - 5、A<sub>0</sub>、B<sub>0</sub>为型腔内侧最底部向上0.3mm处测量为准; K为内部深度;
  - 6、型腔外形未标明处倒角R为0.2-0.3;

# B FBOE AFFMAOGP NB POA



| ITEM | W | A <sub>0</sub> | B <sub>0</sub> | K <sub>0</sub> | E | F | D <sub>1</sub> | D <sub>2</sub> | P <sub>2</sub> | P <sub>1</sub> | P <sub>2</sub> | t |
|------|---|----------------|----------------|----------------|---|---|----------------|----------------|----------------|----------------|----------------|---|
|      |   |                |                |                |   |   |                |                |                |                |                |   |

- 备注:
- 任意10个齿轮的累计误差不得超过 $\pm 0.2\text{mm}$
  - 材料厚度以载带边缘测量为准;
  - 载带长度方向100mm距离的非平行度不得超过1mm; 超过250mm不计算累计误差;
  - A<sub>0</sub>、B<sub>0</sub>为型腔内侧最底部向上0.3mm处量为准; K为内部深度;
  - 型腔外形凡未标明处倒角R为0.2、0.3